

40TH ANNUAL BREEDING STOCK SALE

APRIL 6, 2013

1:00 pm

“Offering the Maritimes Best at the biggest sale East of Quebec”

Heated Sale Facility

Nappan Nova Scotia

Telephone: 902-661-2855

Email: maritimebeef@eastlink.ca

Web: www.maritimebeefsteststation.com

Hot Roast Beef Dinner at the Nappan United Church starting at 11:00 am
4-H Canteen on site

67 Yearling Bulls on Offer

- Born between December 15, 2011 and March 15, 2012
- Available EPDs, ultrasound and reproductive measurements available

15 Yearling Open Heifers

- Born between December 15, 2011 and March 15, 2012
- Developed on TMR Ration
- Potential Foundation Cattle

For More Information

NS

Kenny Thompson

902-661-2855 or 902-664-8936

PEI

Les Halliday

902-314-0827

NB

Guy LeBlanc

506-453-5466

pour des renseignements en francais



**Agriculture et
Agroalimentaire Canada**

**Agriculture and
Agri-Food Canada**

IVOMEC® BRINGS MORE TO THE EQUATION.

LOCAL 4-H CLUB SUPPORT
WITH \$10 BOX BACK
PROGRAM REFUND

UP TO \$12 REFUND
WITH OUR
JUG RECYCLING
PROGRAM

+ TOTAL SATISFACTION
LICE GUARANTEE

+ MERIAL'S
HIGH QUALITY
FORMULATION
& STANDARDS

+ PROVEN
PERFORMANCE
FOR 23 YEARS

+ A NEW LOWER
PRICE

A BETTER
ROI



© The CATTLEHEAD LOGO and IVOMEC® are registered trademarks of Merial Limited.
© 2011 Merial Canada Inc. All rights reserved. IVMO-11-2554-JA MER-2090

Igenity[®] Results Key

for beef

Using the power of DNA, Igenity helps you understand and manage the potential for animals to perform and transmit traits of economic importance. The comprehensive profile includes:

Carcass Composition

The Igenity profile scores for Yield Grade, Ribeye Area, and Backfat Thickness are calculated using multiple DNA markers that reflect the animal's genetic potential for these traits. For example, animals with an Igenity profile score of 10 for Ribeye Area will have a 2.56 in² larger ribeye than animals which score a one. Ribeye Area is scored in square inches, Backfat in inches, and Yield Grade in Yield Grade scores (1-5). These Igenity results provide a more complete picture of the Carcass Composition potential for an animal.

Carcass Quality

The Igenity profile scores for Quality Grade and Marbling reflect extremely powerful multiple marker analyses which are indicative of an animal's potential for intramuscular fat deposition and Choice or better Quality Grade carcasses. The Igenity profile score for Marbling Scores translate to the 100 to 999 scale, where 400 represents low Choice. Marbling score is particularly useful in deciding between animals with similar marbling EPDs or ultrasound data. The Igenity profile for Quality Grade reflects the percent Choice or higher – so 64.4% more animals with an Igenity Quality Grade score of 10 will grade Choice or higher than animals with a score of 1.

The Igenity profile score for Tenderness score represents animals' genetic potential for tenderness as measured by the Warner Bratzler shear force test, with 10 being the most tender and 1 the least tender.

Maternal and Reproductive Traits

Reproduction is arguably the most economically important trait for Cow/Calf producers.¹ Heifer Pregnancy Rate is a heifer's chance at becoming pregnant over a normal breeding season, relative to other heifers. Stayability is the chance a heifer will remain in the herd until at least six years old, relative to other animals. Maternal Calving Ease is measured as the percentage of unassisted births – a higher value is greater calving ease. These Igenity profiles can be used to make replacement heifer decisions as well as be used to select future maternal sires.

Average Daily Gain

A key profitability measurement for any operation, Average Daily Gain (ADG) is measured in lbs of gain per day. The Igenity profile results for ADG identifies an animal's genetic potential for rate of gain, for both calves and post-weaning growth. Animals which score a 10 will gain an additional .81 lbs per day over animals which score a 1 – which could mean a 166 lb difference over 205 days.



Using the 1 to 10

The values listed in the chart on the back reflect the relative difference expected in animals compared to contemporaries with an Igenity profile score of 1. Higher scores are not necessarily better – it just means that the animal has the potential for more of that trait. For the most informed decisions use Igenity profiles in conjunction with other selection and management tools like conformation and EPDs. Select the scores which are best for your animals and your operation.

Feed Efficiency

The Igenity Feed Efficiency analysis predicts genetic potential for Residual Feed Intake (RFI). RFI describes an animal's feed intake above or below its predicted needs for maintenance and growth. An animal with a low RFI score will

- Eat less to achieve the same gains,
- Gain more on the same amount of feed,
- Require less feed to maintain body condition as a mature adult.

The results of Feed Efficiency combined with ADG give you a powerful look at an animal's ability to grow efficiently, maintain body condition as a mature animal and have efficient offspring.

Results are specific to *Bos indicus* or *Bos taurus*.

Docility

Calm cattle are not just about handler safety – calm cattle eat more², have better response to vaccinations and preconditioning³, and are more tender.⁴ The Igenity profile for docility is the animal's genetic potential to be extremely calm, or to have calm offspring. Higher scores from Igenity for this trait indicate a higher percentage of calves that possess acceptable behavior.

Bovine Viral Diarrhea - Persistently Infected (BVD PI)

This is a test for the presence of the BVD virus. Negative animals are free of the BVD virus. Positive animals have the virus present. If there is a positive test result, first contact your veterinarian. To make sure that the calf is not transiently infected with BVD, wait 30 days and re-submit a new sample on the same animal. If that sample is also positive, it is likely that the calf is persistently infected with BVD.

Coat Color

The Igenity Coat Color analysis looks at the genes that determine red or black coat color. Results are reported as:

- Y Homozygous Black
- N Not Homozygous black

The black (ED) gene is dominant over red (e). Black animals may carry one or two copies of the black gene. Only homozygous black animals will have 100% black offspring.

Wild Type (E+) is neutral to red and black, and generally allows the expression of the other gene. The following results are available online:

- E^DE^D Homozygous Black
- E^DE⁺ Black Carrier, Wild Type
- E^De Red Carrier
- E⁺e Red Carrier, Wild Type
- E⁺E⁺ Wild Type, Any Color
- ee Red

Horned/Polled

The Igenity Horned/Polled analysis uses multiple markers to identify horned and polled animals. The polled allele is dominant over the horned allele, so animals can appear polled despite carrying a horned gene. This analysis is breed specific for purebred animals and each breed has a different set of markers involved. The results do not reveal the presence or absence of scurs.

- HH Homozygous Horned
- HP Heterozygous Horned/Polled
- IH One Horned allele, one indeterminate allele
- PP Homozygous Polled
- U Unknown
- UH One Horned allele, one unknown allele
- I Indeterminate - may be resolved with additional data, such as pedigree or a parent sample. Please contact Igenity for more information.

Myostatin

Myostatin, as part of the Igenity Profile, analyzes for nine different variants of the myostatin gene, even though some may not be found in all breeds.

Six variants are classified as "disruptive;" these cause muscle hypertrophy (double-muscling), larger birth weights, increased dystocia and enhanced tenderness. Three myostatin variants are referred to as "missense," and will increase muscularity and reduce external and intramuscular fat, with no change in birth weight.

For all myostatin variants one copy is intermediate.

Disruptive variants are: Missense variants are:

C313Y	nt419	D182N
E226X	nt821	F94L
E291X	Q204x	S105C

Myostatin results are reported as:

- 0 None of the nine possible variants are present
- 1, Variant One copy of the listed variant is present
- 2, Variant two copies of the listed variant are present

SR (Sample Rejected)

Samples may be rejected for many reasons including insufficient follicles, fecal contamination, excessive dirt, evidence of tampering, mold or other foreign matter.

NR (No Result)

Some samples may look normal, but still are unable to produce acceptable results. This often occurs due to contaminants that are undetectable to the naked eye, dirt, mold or other foreign matter.

For both SR and NR results, a sample from the same animal can be resubmitted at no charge.

X

Results are not complete.

Using the 1 to 10 Scores

The values listed in the chart on page four reflect the relative differences expected in animals across breeds compared to their contemporaries. Higher scores are not necessarily better – it just means that the animal has more of that trait. For the most informed decisions, use Igenity profiles in conjunction with the other selection and management tools like conformation, structural soundness and EPDs. Select the scores that best represent your herd goals.

The potential genetic difference between two animals can be estimated by using the table on page four to compare their Igenity scores. Below are some examples using the Igenity scores and the corresponding effects from the Igenity research and development population.

Average Daily Gain		
	Score	Effect
Animal A	7	.54
Animal B	3	.14
		.40 lb.

In this example, you would expect Animal A to gain .40 lb. more per day than Animal B. Therefore, if Animal A gains 3.4 pounds per day, it is predicted that Animal B will gain 3.0 pounds per day.

Percent Choice		
	Score	Effect
Animal A	8	50.1
Animal B	4	21.5
		28.6%

Animal A has a 28.6% higher probability of grading Choice compared to Animal B. Also, a pen of Igenity score 8 fed cattle is predicted to have 28.6% more Choice cattle than a pen of cattle with an average Igenity score of 4.

Residual Feed Intake (RFI-Taurus)		
	Score	Effect
Animal A	7	2.7
Animal B	2	0.4
		2.3 lb.

RFI is a measure of feed efficiency. Lower RFI scores are more desirable when combined with average or better scores for average daily gain (ADG). In this example, Animal B is predicted to consume 2.3 pounds per day less feed than Animal A to achieve the same daily gain.

Heifer Pregnancy Rate		
	Score	Effect
Heifer A	6	10.0
Heifer B	3	4.0
		6.0%

It is predicted that Heifer A, with an Igenity score of 6, has a 6.0% higher probability of getting pregnant after a normal breeding season than Heifer B with an Igenity score of 3.

Stayability		
	Score	Effect
Heifer A	8	12.9
Heifer B	3	3.9
		9.0%

In this example, heifers with an Igenity score of 8 are expected to have a 9% higher probability of staying in the herd through 6 years of age compared to heifers with a score of 3.

Docility		
	Score	Effect
Animal A	8	34.7
Animal B	3	10.7
		24.0%

The Igenity docility score is an indicator of temperament. In this example, Animal A would be expected to have a 24% higher probability of having quiet temperament versus animal B under the same conditions.

Validation Process

Analyses in the comprehensive Igenity® profile begins with the discovery of DNA markers (most often single nucleotide polymorphisms or SNPs). All the markers behind the Igenity profile were discovered by independent scientists at research institutions, including universities, research organizations, and government entities such as USDA.

Markers are then analyzed at Igenity in validation populations. High quality validation is dependent on good quality resource populations. Igenity uses multiple resource populations that represent various production environments and biological types, often working with industry partners from the seedstock, cow-calf, feedlot and/or packing segments of the beef industry to collect phenotypes that are not commonly available. To date, Igenity has captured data from tens of thousands of animals with hundreds of phenotypes under many different types of environmental conditions for use in its validation efforts.

Once the phenotypic data is captured, geneticists at Igenity carefully analyze marker associations, using analytical methods that are well documented in the scientific literature and reviewed with academic and government scientists to ensure their validity and acceptance. Markers are analyzed individually and in groups of markers to determine the most powerful combination for any given trait. Thousands of animal phenotypes are used to conduct these analyses, resulting in confidence that any significant associations discovered will have a high probability of truly occurring in various biological types and environments. Only after new markers pass this rigorous validation process does Igenity make new markers available to the beef industry.

Visit www.igenity.com for additional information, to order additional kits and view your results online.

Igenity profile results and associated effects*

Igenity Result	Residual Feed Intake (Indicus)**	Residual Feed Intake (Taurus)**	Average Daily Gain***	Tenderness in lbs. of WBSF	USDA Marbling Score	% Choice & higher	Yield Grade	Back Fat Thickness (in)	Ribeye Area (in ²)	Heifer Pregnancy Rate (%)	Stayability (%)	Maternal Calving Ease (%)	Docility (%)
10	5.5	4.2	0.81	-2.3	161.4	64.4	1.35	.37	2.56	18.8	16.7	9.5	45.4
9	5.0	3.6	0.72	-2.0	141.3	57.2	1.21	.32	2.22	16.2	14.7	8.4	39.6
8	4.2	3.1	0.64	-1.9	123.6	50.1	1.07	.28	1.93	14.2	12.9	7.3	34.7
7	3.6	2.7	0.54	-1.5	106.4	42.9	0.92	.24	1.64	12.1	11.2	6.2	30.0
6	3.0	2.2	0.44	-1.2	88.4	35.8	0.76	.21	1.35	10.0	9.5	5.1	25.3
5	2.4	1.8	0.34	-1.1	70.6	28.6	0.61	.17	1.07	8.1	7.6	4.1	20.5
4	1.9	1.3	0.24	-0.8	53.3	21.5	0.46	.13	0.80	6.0	5.8	3.1	15.7
3	1.2	0.9	0.14	-0.4	35.5	14.3	0.31	.09	0.53	4.0	3.9	2.0	10.7
2	0.6	0.4	0.05	-0.2	17.7	7.2	0.15	.06	0.24	1.9	2.5	1.0	5.8
1	0	0	0	0	0	0	0	0	0	0	0	0	0
P-value	5.7E-13	8.04E-08	2.4E-19	1.9E-08	3.8E-18	1.0E-20	1.6E-16	3.9E-20	1.8E-14	2.6E-30	1.1E-34	4.2E-32	3.1E-19

*Data on file at Neogen. Results expressed represent differences expected in animals compared to contemporaries with Igenity Profile scores of 1.

**Lbs of feed per day.

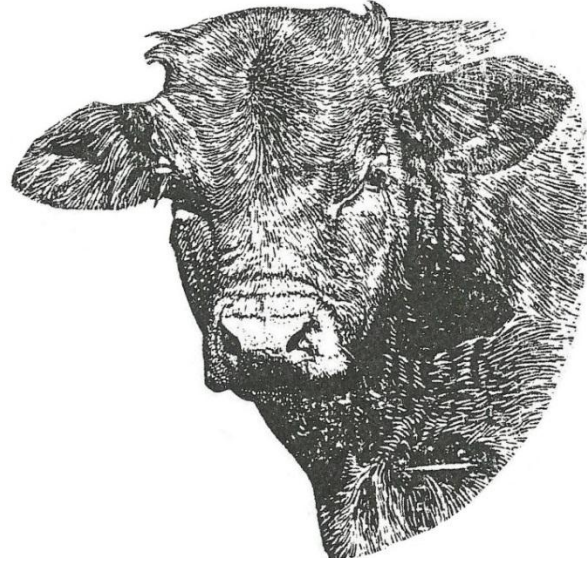
*** Lbs of gain per day.

WBSF = Warner-Bratzler shear force



1-877-IGENITY www.igenity.com

©Neogen and Igenity are registered trademarks of Neogen Corporation.
©2012 Neogen Corporation, Lansing, MI. All rights reserved.
MNA04812



BULLS

PLEASE NOTE: Bidders unable to attend the sale have the option to bid by telephone by calling the MBTS office 902-661-2855; Kenny Thompson (Cell) 902-664-8936; Guy LeBlanc (pour des renseignements en français) 506-453-5466; Brad McCallum 902-957-2754 or Les Haliday 902-569-7639. Visit our web site for information during Sale Week at: www.maritimebeefsteststation.com

DEFINITIONS

ON TEST WEIGHT is the weight taken November 30, 2012, after the bulls completed the normal adjustment period and started on official test. (Recorded in pounds)

OFF TEST WEIGHT is the weight on completion of test, that being the weight taken March 21 and 22, 2013. (Recorded in pounds)

A.D.G. ON TEST total gain while on test divided by 112 days.

RESIDUAL FEED INTAKE Residual Feed Intake (RFI) is a measure of feed efficiency that is independent of body size and body type, contrary to feed: gain ratios which favour bigger body types. Measuring RFI requires measuring a group of cattle's individual daily feed intake and growth rate for 70 days. A statistical formula is created using the groups' intakes, body weight and growth that can be used to estimate an individual animal's expected daily intake based on its own body weight and growth rate. Subtract this number from the actual average daily intake, and we have its residual feed intake (net feed efficiency), where a lower number is better (like golf). The average RFI is 0 for the group. The RFI of cattle heritable – bulls with low (improved) RFI will produce calves with improved RFI.

YEARLING INDEX is the adjusted yearling weight expressed as a percentage of adjusted yearling weight for all bulls on test of that breed.

EXAMPLE: An index of 115 indicates that the bull had a yearling weight of 15 % above the average of all bulls of that breed.

AVERAGE FAT is the ultrasonic measurement of fat cover in millimeters and gives an indication of the relative fat cover on bulls in the sale. The average on the **SALE BULLS** is 4.56 mm so buyers can compare bulls to this average.

SCROTAL CIRCUMFERENCE is used as a measure of sperm-producing ability. The following table gives the minimum recommended size in centimeters of bulls at one year of age.

<u>BREED</u>	<u>1 YEAR</u>
Simmental	35.9
Aberdeen Angus	33.8
Charolais	32.9
Hereford Horned	32.8
Shorthorn	32.4
Polled Hereford	32.2
Limousin	30.3
Saler	31.0

CALVING EASE SCORE a rating assigned by the breeder to indicate the ease of calving. Rating indicated by the following letters:

U Unassisted	M Mal Presentation
E Easy Pull	S Surgical
H Hard Pull	V Voluntary Pull

RIB EYE

The Rib Eye area gives an indication of overall carcass muscling. Rib Eye is measured using **Real Time Ultrasound**. The “scan” is taken at the grading site between the 12th and 13th ribs. Rib Eye area is an estimate of lean yield.

10 sq. in. and under	low
10.1 sq. in. - 13.0 sq. in	average
13.1 sq. in. and up	high

MARBLING - % OF INTRAMUSCULAR FAT

Marbling is an indication of intramuscular fat. Marbling is measured using **Real Time Ultrasound**. The “scan” is taken at the grading site between the 12th and 13th rib. The following table correlates the percentage of intramuscular fat to the Canadian Grading System.

Practically Devoid	0 - 1.86
Single A (A)	1.86 - 3.50
Double A (AA)	3.50 - 5.24
Triple A (AAA)	5.24 - 10.90
Canada Prime	10.90

ESTIMATED PROGENY DIFFERENCE (EPD)

An EPD (Expected Progeny Difference) is an estimated average number for a particular animal’s trait. Those traits are things like: birth weight; calving ease; weaning weight; yearling weight and maternal milk. EPDs are not absolute figures; they are estimates based on averages. EPDs are based on the animal’s own performance and pedigree records as well as those of its sire, grandsire, and siblings and of course, offspring. One thing to keep in mind is the **EPDs can only be used to compare within breeds**. Each breed has its own average values for EPDs.

Birth Weight EPD

A bull’s birth weight EPD shows the expected difference in average birth weight (pounds) for his progeny. Positive values signify heavier than average birth weights for that breed whereas negative values signify lighter birth weights.

Weaning Weight EPD

A weaning weight EPD shows the ability of the calf to grow between birth and weaning, expressed in pounds of gain.

Yearling Weight EPD

A yearling weight EPD value shows the ability of a bull’s offspring to grow from birth to one year of age, expressed in pounds of gain.

Maternal Milk EPD

Maternal milk EPD is one that signifies the ability of a sire’s daughter to provide the calf with milk and mothering ability expressed as pounds of calf at weaning time.

Accuracy of EPDs

The accuracy (Acc) value for each EPD estimate is very important. It is a measure of how good the EPD estimate really is. It is measured from 0 to 100. The closer to one hundred, the higher the accuracy of that EPD.

TOTAL MIXED RATION

Indicates the bulls were fed on a Total Mixed Ration (silage based) purchased from Agriculture & Agri-Food Canada.

TERMS AND CONDITIONS

These terms are applicable to Yearling Bulls described within this Catalogue.

Cash or a satisfactory cheque. Payment shall be made to the clerk. Sale and release of the animals will be given only when satisfactory settlement has been made by the buyer.

CONDITIONS OF SALE

Should any bull, after reaching the age of 14 months, fail to prove a breeder after being used for a reasonable period of time on cows known to be breeding, the matter shall be reported in writing to the consignor who shall then have the privilege of a reasonable period of time in which to prove the bull a breeder before refunding the purchase price or making other settlement satisfactory to the buyer. In order to qualify as a breeder, a bull must be able to perform natural service.

Transportation of any animal(s) being returned to the consignor shall be paid by the shipper. The Sale Management acts as an agent only and under no circumstances will it accept financial responsibility between buyer and seller for any health, breeding or other problems that may arise following the Sale.

BIDS

Every animal is pledged to absolute sale (unless withdrawn for just cause prior to being offered for sale), but the Sale Management shall have the right to set a floor price applicable to all animals offered for sale and to reject any bid which it considers irresponsible. The Consignor has the option to place a reserved bid published in the Catalogue, and that animal shall not be sold for less than that published price.

CERTIFICATES

All animals eligible for registration or recordation are recorded or will be recorded in the Herd Book of the Breed Association. Transferred registry certificates will be forwarded to the purchaser of each purebred animal.

RISK

All animals are at the purchaser's risk as soon as sold.

ANNOUNCEMENTS

Any announcements from the auction stand will take precedence over any printed matter.

ACCIDENTS

Neither the Sale Management, the auctioneer, nor the owners of the cattle will in any way be responsible for the condition of the grounds or the behavior of the cattle being sold and disclaim any liability in the event of personal accident or property loss.

COMMISSION FEE

A 8.5% selling commission and a transfer cost will be charged to the seller and deducted from his payment.

ERRORS

Every attempt has been made to properly describe each lot. Neither the Management nor the compilers of pedigrees assume any responsibility for errors, which may occur in the Catalogue.

SALE MANAGED BY: MARITIME BEEF TESTING SOCIETY

NOTE:* THE ABOVE TERMS AND CONDITIONS SHALL BE A CONTRACT BETWEEN THE BUYER AND SELLER OF EACH LOT**

Lot No: 1 **CHAROLAIS** **Tag No: 68**

On Test Wt: 1117.5 Birth Wt: 98 Adj Rib Eye (sq in): 16.7 Scrot (cm): 36.5
 Off Test Wt: 1627.5 Calving Ease: U Adj Marbling %: 1.9 Horn Cond: P
 ADG: 4.55 Adj Yr. Wt 1334.92 Avg Fat (mm): 4 Rump fat (mm): 6
 WDA: 3.66 WDA Index: 116 RFI: -1.83

Owner: CORNERSTONE CHAROLAIS, (RICKY & NANCY MILTON), 4558 RTE 19, NINE MILE CREEK, PE, 902-393-8699

Name: CHARHAVEN ZODIAC 121Z
 QPMC343763 Tattoo: WCBR 121Z Birth Date: 01/01/12
 Sire: TR RED SMOKE PMC316641
 Dam: CHARHAVEN X-POSE 102X PFC381458

Expected Progeny Difference (EPD)

Calving / Acc		Birth / Acc		Weaning / Acc		Yearling / Acc		Milk / Acc		Total Maternal / Acc	
88	0.19	2.1	0.34	47	0.17	91	0.13	14.9	0.07	38	0.1

Igenity Profile

RFI: 5 Yield Grade: 5 Stayability: 7
 Tenderness: 3 Fat Thickness: 4 Mat. Calving Ease: 5
 Marbling Score: 4 Ribeye Area: 6 Docility: 6
 Quality Grade: 4 Heifer Preg Rate: 6 BVDV: NEG

Lot No: 2 **CHAROLAIS** **Tag No: 19**

On Test Wt: 1077.5 Birth Wt: 105 Adj Rib Eye (sq in): 13.6 Scrot (cm): 40
 Off Test Wt: 1672.5 Calving Ease: U Adj Marbling %: 2.2 Horn Cond: P
 ADG: 5.31 Adj Yr. Wt 1329.98 Avg Fat (mm): 3 Rump fat (mm): 5
 WDA: 3.64 WDA Index: 116 RFI: 0.42

Owner: HARMINCREST CHAROLAIS, (E ROYDEN JARVIS), 2898 RTE 121, ABOHAQUI, NB, 506-433-2396

Name: HARMINCREST MEADOW LARK 43Y
 PMC349356 Tattoo: AIUN 43Y Birth Date: 12/18/11
 Sire: CROSBY'S SIR WILLIAM 916W PMC324421
 Dam: HARMINCREST GEORGIE 2G PFC243211

Expected Progeny Difference (EPD)

Calving / Acc		Birth / Acc		Weaning / Acc		Yearling / Acc		Milk / Acc		Total Maternal / Acc	
48		2.2		40		73		20		40	

Igenity Profile

RFI: 4 Yield Grade: 5 Stayability: 7
 Tenderness: 3 Fat Thickness: 3 Mat. Calving Ease: 7
 Marbling Score: 4 Ribeye Area: 5 Docility: 4
 Quality Grade: 4 Heifer Preg Rate: 5 BVDV: NEG

Lot No: 3 **CHAROLAIS** **Tag No: 111**

On Test Wt: 1055 Birth Wt: 92 Adj Rib Eye (sq in): 14.3 Scrot (cm): 45
 Off Test Wt: 1572.5 Calving Ease: U Adj Marbling %: 2.1 Horn Cond: P
 ADG: 4.62 Adj Yr. Wt 1313.42 Avg Fat (mm): 4 Rump fat (mm): 6
 WDA: 3.60 WDA Index: 114 RFI: -1.10

Owner: DOWNEAST CHAROLAIS, (ROBERT EASTWOOD), 227 RTE 875, BELLISLE CREEK, NB, 506-485-2634

Name: DOWNEAST ZACHARY 7Z
 PMC346275 Tattoo: EAST 7Z Birth Date: 01/09/12
 Sire: CORNERSTONE WISE GUY 5W PMC324055
 Dam: DOWNEAST NOLA 4N PFC329354

Expected Progeny Difference (EPD)

Calving / Acc		Birth / Acc		Weaning / Acc		Yearling / Acc		Milk / Acc		Total Maternal / Acc	
86	0.16	0.1	0.35	43	0.19	80	0.09	18.8	0.09	40	0.12

Igenity Profile

RFI: 4 Yield Grade: 4 Stayability: 5
 Tenderness: 4 Fat Thickness: 3 Mat. Calving Ease: 7
 Marbling Score: 6 Ribeye Area: 7 Docility: 4
 Quality Grade: 6 Heifer Preg Rate: 7 BVDV: NEG

Lot No: 4 **CHAROLAIS** **Tag No: 67**

On Test Wt: 935 Birth Wt: 95 Adj Rib Eye (sq in): 14.6 Scrot (cm): 35.5
 Off Test Wt: 1362.5 Calving Ease: U Adj Marbling %: 2.8 Horn Cond: P
 ADG: 3.82 Adj Yr. Wt 1301.87 Avg Fat (mm): 5 Rump fat (mm): 6
 WDA: 3.57 WDA Index: 113 RFI: 1.44

Owner: CORNERSTONE CHAROLAIS, (RICKY & NANCY MILTON), 4558 RTE 19, NINE MILE CREEK, PE, 902-393-8699

Name: CORNERSTONE ZORRO 11Z
 PMC343758 Tattoo: RNM 11Z Birth Date: 03/04/12
 Sire: WATCHA STIFF UPPER LIP 22S QPMC302271
 Dam: CORNERSTONE WHAT A GAL 2W PEFC375485

Expected Progeny Difference (EPD)

Calving / Acc		Birth / Acc		Weaning / Acc		Yearling / Acc		Milk / Acc		Total Maternal / Acc	
54	0.15	3.6	0.32	51	0.14	94	0.11	16.8	0.09	42	0.11

Igenity Profile

RFI: 6 Yield Grade: 5 Stayability: 7
 Tenderness: 4 Fat Thickness: 5 Mat. Calving Ease: 5
 Marbling Score: 5 Ribeye Area: 5 Docility: 5
 Quality Grade: 5 Heifer Preg Rate: 5 BVDV: NEG

Lot No: 5**CHAROLAIS****Tag No: 45**

On Test Wt: 940 Birth Wt: 100 Adj Rib Eye (sq in): 16.4 Scrot (cm): 37
 Off Test Wt: 1420 Calving Ease: U Adj Marbling %: 2.4 Horn Cond: H
 ADG: 4.29 Adj Yr. Wt 1245.91 Avg Fat (mm): 4 Rump fat (mm): 6
 WDA: 3.41 WDA Index: 109 RFI: -0.94

Owner: LXL CHAROLAIS FARM, (LOUIS & BENOITE LEBLANC), 1041 RTE 933, HAUTE ABOUJAGANE, NB, 506-532-4028

Name: LXL ROXY LXL 11Z
 QMC343675 Tattoo: LXL 11Z Birth Date: 01/30/12
 Sire: SVY AD INVINCIBLE P 748T PMC309953
 Dam: LEC PEBBLES 1P QPFC335829

Expected Progeny Difference (EPD)

Calving / Acc		Birth / Acc		Weaning / Acc		Yearling / Acc		Milk / Acc		Total Maternal / Acc	
71	0.17	2	0.37	36	0.23	67	0.12	15	0.12	33	0.16

Igenity Profile

RFI: 7 Yield Grade: 4 Stayability: 6
 Tenderness: 4 Fat Thickness: 6 Mat. Calving Ease: 6
 Marbling Score: 5 Ribeye Area: 6 Docility: 6
 Quality Grade: 5 Heifer Preg Rate: 6 BVDV: NEG

Lot No: 6**CHAROLAIS****Tag No: 108**

On Test Wt: 930 Birth Wt: 94 Adj Rib Eye (sq in): 14.9 Scrot (cm): 40.5
 Off Test Wt: 1475 Calving Ease: U Adj Marbling %: 2.2 Horn Cond: P
 ADG: 4.87 Adj Yr. Wt 1226.37 Avg Fat (mm): 6 Rump fat (mm): 5
 WDA: 3.36 WDA Index: 107 RFI: -2.24

Owner: DOWNEAST CHAROLAIS, (ROBERT EASTWOOD), 227 RTE 875, BELLISLE CREEK, NB, 506-485-2634

Name: DOWNEAST ZIGGY 3Z
 PMC346274 Tattoo: EAST 3Z Birth Date: 01/07/12
 Sire: CORNERSTONE WISE GUY 5W PMC324055
 Dam: DOWNEAST TESS 4T PFC362289

Expected Progeny Difference (EPD)

Calving / Acc		Birth / Acc		Weaning / Acc		Yearling / Acc		Milk / Acc		Total Maternal / Acc	
55	0.15	2.1	0.35	46	0.18	88	0.08	18.2	0.08	41	0.11

Igenity Profile

RFI: 6 Yield Grade: 5 Stayability: 6
 Tenderness: 4 Fat Thickness: 4 Mat. Calving Ease: 7
 Marbling Score: 6 Ribeye Area: 5 Docility: 6
 Quality Grade: 6 Heifer Preg Rate: 5 BVDV: NEG

Lot No: 7 **CHAROLAIS** **Tag No: 46**

On Test Wt: 957.5 Birth Wt: 105 Adj Rib Eye (sq in): 13 Scrot (cm): 37
 Off Test Wt: 1422.5 Calving Ease: U Adj Marbling %: 2 Horn Cond: P
 ADG: 4.15 Adj Yr. Wt 1166.77 Avg Fat (mm): 4 Rump fat (mm): 5
 WDA: 3.20 WDA Index: 102 RFI: -1.88

Owner: LXL CHAROLAIS FARM, (LOUIS & BENOITE LEBLANC), 1041 RTE 933, HAUTE ABOUJAGANE, NB, 506-532-4028

Name: LXL WISE-GUY LXL 3Z
 PMC343590 Tattoo: LXL 3Z Birth Date: 01/01/12
 Sire: GERRARD MONTEZUMA 6T PMC310671
 Dam: LXL MYSTIC 10M PFC310846

Expected Progeny Difference (EPD)

Calving / Acc		Birth / Acc		Weaning / Acc		Yearling / Acc		Milk / Acc		Total Maternal / Acc	
58	0.2	3.2	0.38	47	0.19	85	0.14	27.2	0.11	51	0.14

Igenity Profile

RFI: 4 Yield Grade: 5 Stayability: 6
 Tenderness: 6 Fat Thickness: 4 Mat. Calving Ease: 6
 Marbling Score: 4 Ribeye Area: 6 Docility: 7
 Quality Grade: 4 Heifer Preg Rate: 6 BVDV: NEG

Lot No: 8 **CHAROLAIS** **Tag No: 110**

On Test Wt: 997.5 Birth Wt: 105 Adj Rib Eye (sq in): 16.4 Scrot (cm): 36
 Off Test Wt: 1437.5 Calving Ease: U Adj Marbling %: 1.8 Horn Cond: P
 ADG: 3.93 Adj Yr. Wt 1165.97 Avg Fat (mm): 4 Rump fat (mm): 5
 WDA: 3.19 WDA Index: 102 RFI: 0.11

Owner: DOWNEAST CHAROLAIS, (ROBERT EASTWOOD), 227 RTE 875, BELLISLE CREEK, NB, 506-485-2634

Name: DOWNEAST YUCATAN 28Y
 PMC346272 Tattoo: EAST 28Y Birth Date: 12/27/11
 Sire: CORNERSTONE WISE GUY 5W PMC324055
 Dam: DOWNEAST UBET 5U PFC371357

Expected Progeny Difference (EPD)

Calving / Acc		Birth / Acc		Weaning / Acc		Yearling / Acc		Milk / Acc		Total Maternal / Acc	
9	0.13	6.3	0.29	54	0.11	102	0.07	17.8	0.05	45	0.07

Igenity Profile

RFI: 5 Yield Grade: 5 Stayability: 6
 Tenderness: 3 Fat Thickness: 4 Mat. Calving Ease: 8
 Marbling Score: 6 Ribeye Area: 7 Docility: 5
 Quality Grade: 6 Heifer Preg Rate: 7 BVDV: NEG

Lot No: 9**CHAROLAIS****Tag No: 50**

On Test Wt: 825 Birth Wt: 99 Adj Rib Eye (sq in): 16.1 Scrot (cm): 46
 Off Test Wt: 1300 Calving Ease: U Adj Marbling %: 2.2 Horn Cond: P
 ADG: 4.24 Adj Yr. Wt 1160.15 Avg Fat (mm): 3 Rump fat (mm): 4
 WDA: 3.18 WDA Index: 101 RFI: -2.19

Owner: (DONALD LEGER), 60 CORMIER VILLAGE RD., GRAND BARACHOIS, NB, 506-532-2920

Name: LXL TONTO LXL 18Z
 PMC343707 Tattoo: LXL 18Z Birth Date: 02/06/12
 Sire: LT WESTERN SPUR PMC293983
 Dam: LXL PEBBLES PRIDE 1X PFC380870

Expected Progeny Difference (EPD)

Calving / Acc		Birth / Acc		Weaning / Acc		Yearling / Acc		Milk / Acc		Total Maternal / Acc	
69	0.22	2.3	0.37	41	0.24	74	0.17	18.2	0.14	39	0.17

Igenity Profile

RFI: Yield Grade: Stayability:
 Tenderness: Fat Thickness: Mat. Calving Ease:
 Marbling Score: Ribeye Area: Docility:
 Quality Grade: Heifer Preg Rate: BVDV:

Lot No: 10**CHAROLAIS****Tag No: 48**

On Test Wt: 990 Birth Wt: 100 Adj Rib Eye (sq in): 12.2 Scrot (cm): 40
 Off Test Wt: 1400 Calving Ease: U Adj Marbling %: 3.1 Horn Cond: P
 ADG: 3.66 Adj Yr. Wt 1150.90 Avg Fat (mm): 4 Rump fat (mm): 3
 WDA: 3.15 WDA Index: 100 RFI: -3.18

Owner: LXL CHAROLAIS FARM, (LOUIS & BENOITE LEBLANC), 1041 RTE 933, HAUTE ABOUJAGANE, NB, 506-532-4028

Name: LXL ZIPPER LXL 4Z
 PMC343591 Tattoo: LXL 4Z Birth Date: 01/02/12
 Sire: GERRARD MONTEZUMA 6T PMC310671
 Dam: LXL NIBBLE 16N PFC323807

Expected Progeny Difference (EPD)

Calving / Acc		Birth / Acc		Weaning / Acc		Yearling / Acc		Milk / Acc		Total Maternal / Acc	
63	0.19	2.8	0.37	46	0.19	84	0.14	27.2	0.11	50	0.14

Igenity Profile

RFI: 4 Yield Grade: 3 Stayability: 5
 Tenderness: 7 Fat Thickness: 4 Mat. Calving Ease: 7
 Marbling Score: 4 Ribeye Area: 5 Docility: 5
 Quality Grade: 4 Heifer Preg Rate: 5 BVDV: NEG

Lot No: 11 **CHAROLAIS** **Tag No: 75**

On Test Wt: 797.5 Birth Wt: 75 Adj Rib Eye (sq in): 13.2 Scrot (cm): 36
 Off Test Wt: 1325 Calving Ease: U Adj Marbling %: 2.3 Horn Cond: P
 ADG: 4.71 Adj Yr. Wt 1146.03 Avg Fat (mm): 4 Rump fat (mm): 5
 WDA: 3.14 WDA Index: 100 RFI: 1.67

Owner: (GRANT & DONNIE McCAFFREY), 1474 BUNGAY RD. RR 3, HUNTER RIVER, PE, 902-964-2580

Name: HUNTER ACRES DENVER 2Z
 QPMC343587 Tattoo: RYJ 2Z Birth Date: 01/24/12
 Sire: TR RED SMOKE PMC316641
 Dam: CROSBY'S RAO 11X PFC381793

Expected Progeny Difference (EPD)

Calving / Acc		Birth / Acc		Weaning / Acc		Yearling / Acc		Milk / Acc		Total Maternal / Acc	
96	0.17	0	0.31	42	0.17	83	0.13	17.8	0.07	39	0.1

Igenity Profile

RFI: 5 Yield Grade: 4 Stayability: 6
 Tenderness: 3 Fat Thickness: 4 Mat. Calving Ease: 5
 Marbling Score: 4 Ribeye Area: 5 Docility: 5
 Quality Grade: 4 Heifer Preg Rate: 5 BVDV: NEG

Lot No: 12 **CHAROLAIS** **Tag No: 109**

On Test Wt: 887.5 Birth Wt: 65 Adj Rib Eye (sq in): 15.8 Scrot (cm): 34
 Off Test Wt: 1382.5 Calving Ease: U Adj Marbling %: 1.8 Horn Cond: P
 ADG: 4.42 Adj Yr. Wt 1118.87 Avg Fat (mm): 6 Rump fat (mm): 6
 WDA: 3.07 WDA Index: 98 RFI: 1.07

Owner: DOWNEAST CHAROLAIS, (ROBERT EASTWOOD), 227 RTE 875, BELLISLE CREEK, NB, 506-485-2634

Name: DOWNEAST YZERMAN 27Y
 PMC346271 Tattoo: EAST 27Y Birth Date: 12/26/11
 Sire: CORNERSTONE WISE GUY 5W PMC324055
 Dam: DOWNEAST TRISH 11T PFC362290

Expected Progeny Difference (EPD)

Calving / Acc		Birth / Acc		Weaning / Acc		Yearling / Acc		Milk / Acc		Total Maternal / Acc	
92	0.13	-1.4	0.29	39	0.12	75	0.07	18.5	0.07	38	0.09

Igenity Profile

RFI: 5 Yield Grade: 4 Stayability: 6
 Tenderness: 5 Fat Thickness: 3 Mat. Calving Ease: 7
 Marbling Score: 5 Ribeye Area: 5 Docility: 4
 Quality Grade: 5 Heifer Preg Rate: 5 BVDV: NEG

Lot No: 13**CHAROLAIS****Tag No: 76**

On Test Wt: 860 Birth Wt: 90 Adj Rib Eye (sq in): 13.9 Scrot (cm): 35.5
 Off Test Wt: 1305 Calving Ease: U Adj Marbling %: 2.2 Horn Cond: P
 ADG: 3.97 Adj Yr. Wt 1070.39 Avg Fat (mm): 7 Rump fat (mm): 7
 WDA: 2.93 WDA Index: 93 RFI: 1.57

Owner: (GRANT & DONNIE McCAFFREY), 1474 BUNGAY RD. RR 3, HUNTER RIVER, PE, 902-964-2580

Name: HUNTER ACRES TEBOW 1Z

QPMC343586

Tattoo: RYJ 1Z

Birth Date: 01/01/12

Sire: SVY AD INVINCIBLE P 748T

PMC309953

Dam: CROSBY'S UDDERLYHOT 851U

PEFC366748

Expected Progeny Difference (EPD)

Calving / Acc		Birth / Acc		Weaning / Acc		Yearling / Acc		Milk / Acc		Total Maternal / Acc	
91	0.15	1.3	0.31	45	0.19	82	0.13	18.9	0.11	41	0.14

Igenity Profile

RFI: 4 Yield Grade: 6 Stayability: 7
 Tenderness: 5 Fat Thickness: 4 Mat. Calving Ease: 4
 Marbling Score: 6 Ribeye Area: 4 Docility: 7
 Quality Grade: 6 Heifer Preg Rate: 4 BVDV: NEG

Lot No: 14**RED ANGUS****Tag No: 87**

On Test Wt: 830 Birth Wt: 82 Adj Rib Eye (sq in): 12.3 Scrot (cm): 35
 Off Test Wt: 1237.5 Calving Ease: U Adj Marbling %: 2.8 Horn Cond: P
 ADG: 3.64 Adj Yr. Wt 1091.03 Avg Fat (mm): 5 Rump fat (mm): 5
 WDA: 2.99 WDA Index: 104 RFI: 2.17

Owner: LORCAIN FARMS, (BARBARA HIGGINS-LARKIN), 113 CANADA ROAD RR 2, MIDDLE MUSQUODOBOIT, NS, 902-384-2926

Name: RED LORCAIN ZOOLANDER

1697715

Tattoo: LOR 1Z

Birth Date: 02/01/12

Sire: RED YY EQUINOX 13X

1561595

Dam: RED CAILSMERE 18R

1277417

Expected Progeny Difference (EPD)

Calving / Acc		Birth / Acc		Weaning / Acc		Yearling / Acc		Milk / Acc		Total Maternal / Acc	
4	12	-1.1	28	41	24	61	23	22	18	42	

Igenity Profile

RFI: 5 Yield Grade: 6 Stayability: 6
 Tenderness: 4 Fat Thickness: 4 Mat. Calving Ease: 6
 Marbling Score: 6 Ribeye Area: 3 Docility: 6
 Quality Grade: 6 Heifer Preg Rate: 3 BVDV: NEG

Lot No: 15 **RED ANGUS** **Tag No: 104**

On Test Wt: 780 Birth Wt: 73 Adj Rib Eye (sq in): 12.4 Scrot (cm): 40
 Off Test Wt: 1230 Calving Ease: U Adj Marbling %: 2.3 Horn Cond: P
 ADG: 4.02 Adj Yr. Wt 1084.42 Avg Fat (mm): 11 Rump fat (mm): 9
 WDA: 2.97 WDA Index: 104 RFI: 0.32

Owner: LINDALE FARMS, (DALE & LINDA LACKIE), 763 RTE 865, SOUTHFIELD, NB, 506-839-2722

Name: RED LINDALE ZORRO RW 6Z
 1655793 Tattoo: LEL 6Z Birth Date: 02/01/12
 Sire: RED BRYLOR SDL REDWOOD 217S 1350610
 Dam: RED KORAN ZETA 120R 555 1271848

Expected Progeny Difference (EPD)

Calving / Acc		Birth / Acc		Weaning / Acc		Yearling / Acc		Milk / Acc		Total Maternal / Acc	
2	18	-0.8	31	43	27	63	26	22	22	43	

Igenity Profile

RFI: 7 Yield Grade: 7 Stayability: 7
 Tenderness: 4 Fat Thickness: 6 Mat. Calving Ease: 5
 Marbling Score: 6 Ribeye Area: 4 Docility: 5
 Quality Grade: 6 Heifer Preg Rate: 4 BVDV: NEG

Lot No: 16 **ANGUS** **Tag No: 13**

On Test Wt: 1175 Birth Wt: 98 Adj Rib Eye (sq in): 15.2 Scrot (cm): 34.5
 Off Test Wt: 1597.5 Calving Ease: U Adj Marbling %: 2.9 Horn Cond: P
 ADG: 3.77 Adj Yr. Wt 1352.87 Avg Fat (mm): 8 Rump fat (mm): 8
 WDA: 3.71 WDA Index: 121 RFI: -0.79

Owner: THUNDERBROOK FARMS, (BETH TRUEMAN), 2786 ROUTE 6 RR#4, AMHERST, NS, 902-667-1137

Name: THUNDERBROOK PITCH BLACK 1Z
 1657179 Tattoo: BCT 1Z Birth Date: 01/15/12
 Sire: SAV NET WORTH 4200 1309743
 Dam: WHEATLEY RIVER ROSIE 1254554

Expected Progeny Difference (EPD)

Calving / Acc		Birth / Acc		Weaning / Acc		Yearling / Acc		Milk / Acc		Total Maternal / Acc	

Igenity Profile

RFI: 7 Yield Grade: 6 Stayability: 7
 Tenderness: 7 Fat Thickness: 6 Mat. Calving Ease: 6
 Marbling Score: 7 Ribeye Area: 4 Docility: 7
 Quality Grade: 7 Heifer Preg Rate: 4 BVDV: NEG

Lot No: 17**ANGUS****Tag No: 42**

On Test Wt: 1070 Birth Wt: 110 Adj Rib Eye (sq in): 13.8 Scrot (cm): 41.5
 Off Test Wt: 1595 Calving Ease: U Adj Marbling %: 2.1 Horn Cond: P
 ADG: 4.69 Adj Yr. Wt 1323.13 Avg Fat (mm): 8 Rump fat (mm): 11
 WDA: 3.63 WDA Index: 118 RFI: -1.22

Owner: HILLCREST FARM, (BILL & MARY BEST), 22 GATES DR, CHARLOTTETOWN, PE, 902-368-2042

Name: BONSHAW ZORRO 50Z

1710557

Tattoo: BEST 50Z

Birth Date: 01/06/12

Sire: GUMBO GULCH CREED

1328102

Dam: BONSHAW HEROINE 11M

1135447

Expected Progeny Difference (EPD)

Calving / Acc	Birth / Acc	Weaning / Acc	Yearling / Acc	Milk / Acc	Total Maternal / Acc

Igenity Profile

RFI: Yield Grade: Stayability:
 Tenderness: Fat Thickness: Mat. Calving Ease:
 Marbling Score: Ribeye Area: Docility:
 Quality Grade: Heifer Preg Rate: BVDV:

Lot No: 18**ANGUS****Tag No: 63**

On Test Wt: 1035 Birth Wt: 90 Adj Rib Eye (sq in): 12.6 Scrot (cm): 38.5
 Off Test Wt: 1527.5 Calving Ease: U Adj Marbling %: 4.1 Horn Cond: P
 ADG: 4.40 Adj Yr. Wt 1252.89 Avg Fat (mm): 7 Rump fat (mm): 9
 WDA: 3.43 WDA Index: 112 RFI: 2.15

Owner: MELVERN SIMMENTALS, (BILL & RICHARD ARMSTRONG), RR#2, KINGSTON, NS, 902-765-6620

Name: MELVERN BRAND NAME 6Z

1662322

Tattoo: RDOH 6Z

Birth Date: 01/01/12

Sire: SAV BRAND NAME 9115

1600096

Dam: AAF BLACKCAP 14G

1435286

Expected Progeny Difference (EPD)

Calving / Acc	Birth / Acc	Weaning / Acc	Yearling / Acc	Milk / Acc	Total Maternal / Acc
5.5	4	31	54	25	98
					21
					27
					12
					54

Igenity Profile

RFI: 7 Yield Grade: 7 Stayability: 6
 Tenderness: 5 Fat Thickness: 7 Mat. Calving Ease: 6
 Marbling Score: 8 Ribeye Area: 4 Docility: 5
 Quality Grade: 8 Heifer Preg Rate: 4 BVDV: NEG

Lot No: 19 **ANGUS** **Tag No: 62**

On Test Wt: 890 Birth Wt: 79 Adj Rib Eye (sq in): 14.1 Scrot (cm): 38
 Off Test Wt: 1382.5 Calving Ease: U Adj Marbling %: 3.3 Horn Cond: P
 ADG: 4.40 Adj Yr. Wt 1157.37 Avg Fat (mm): 8 Rump fat (mm): 5
 WDA: 3.17 WDA Index: 103 RFI: 1.01

Owner: MELVERN SIMMENTALS, (BILL & RICHARD ARMSTRONG), RR#2, KINGSTON, NS, 902-765-6620

Name: MELVERN NET WORTH 97Z
 1662323 Tattoo: RDOH 97Z Birth Date: 01/10/12
 Sire: SAV NETWORK 4200 1309743
 Dam: WORTH-A-BIT 21U 1444427

Expected Progeny Difference (EPD)

Calving / Acc		Birth / Acc		Weaning / Acc		Yearling / Acc		Milk / Acc		Total Maternal / Acc	
8	26	2.2	32	43	25	82	19	23	19	45	

Igenity Profile

RFI: 7 Yield Grade: 7 Stayability: 5
 Tenderness: 8 Fat Thickness: 6 Mat. Calving Ease: 5
 Marbling Score: 6 Ribeye Area: 5 Docility: 6
 Quality Grade: 6 Heifer Preg Rate: 5 BVDV: NEG

Lot No: 20 **ANGUS** **Tag No: 107**

On Test Wt: 865 Birth Wt: 95 Adj Rib Eye (sq in): 11.9 Scrot (cm): 36
 Off Test Wt: 1365 Calving Ease: U Adj Marbling %: 3.2 Horn Cond: P
 ADG: 4.46 Adj Yr. Wt 1153.30 Avg Fat (mm): 9 Rump fat (mm): 4
 WDA: 3.16 WDA Index: 103 RFI: 3.38

Owner: WHEATLEY RIVER FARM, (GLEN & RONNIE FORD), 585 CROOKED CREEK RD RTE 251, OYSTER BED, PE, 902-621-2096

Name: WHEATLY RIVER RUSH
 1676436 Tattoo: ZGR 7Z Birth Date: 01/14/12
 Sire: COTTAGE CREEK RUSH 902W
 Dam: NEW FORCE EFFIE 8M

Expected Progeny Difference (EPD)

Calving / Acc		Birth / Acc		Weaning / Acc		Yearling / Acc		Milk / Acc		Total Maternal / Acc	
1		2.6		42		68		16		37	

Igenity Profile

RFI: 4 Yield Grade: 8 Stayability: 6
 Tenderness: 4 Fat Thickness: 7 Mat. Calving Ease: 4
 Marbling Score: 9 Ribeye Area: 3 Docility: 4
 Quality Grade: 9 Heifer Preg Rate: 7 BVDV:

Lot No: 21 **ANGUS** **Tag No: 102**

On Test Wt: 920 Birth Wt: 80 Adj Rib Eye (sq in): 11.9 Scrot (cm): 38.5
 Off Test Wt: 1347.5 Calving Ease: U Adj Marbling %: 2.5 Horn Cond: P
 ADG: 3.82 Adj Yr. Wt 1117.81 Avg Fat (mm): 6 Rump fat (mm): 4
 WDA: 3.06 WDA Index: 100 RFI: 0.10

Owner: WORTH-A-BIT ANGUS, (ERIC & TIM DIXON), 140 NORTH TRYON CROSS RD, ALBANY, PE, 902-432-4771

Name: WORTH-A-BIT THUNDER 4Z
 1669846 Tattoo: TXE 4Z Birth Date: 01/06/12
 Sire: CONNEALY THUNDER
 Dam: WORTH-A-BIT PRIDE 7X

Expected Progeny Difference (EPD)

Calving / Acc		Birth / Acc		Weaning / Acc		Yearling / Acc		Milk / Acc		Total Maternal / Acc	
6	28	0.9	35	53	26	92	22	25	19	52	

Igenity Profile

RFI: 6 Yield Grade: 7 Stayability: 9
 Tenderness: 7 Fat Thickness: 6 Mat. Calving Ease: 5
 Marbling Score: 8 Ribeye Area: 4 Docility: 7
 Quality Grade: 8 Heifer Preg Rate: 4 BVDV: NEG

Lot No: 22 **ANGUS** **Tag No: 100**

On Test Wt: 772.5 Birth Wt: 80 Adj Rib Eye (sq in): 12.3 Scrot (cm): 38.5
 Off Test Wt: 1245 Calving Ease: U Adj Marbling %: 2.2 Horn Cond: P
 ADG: 4.22 Adj Yr. Wt 1081.96 Avg Fat (mm): 6 Rump fat (mm): 5
 WDA: 2.96 WDA Index: 97 RFI: -0.31

Owner: (ROBERT HIGGINS), 8 GOOSEDOWN LANE, QUISPAMIS, NB, 506-847-8265

Name: CAMARO OF MODEL FARM 5Z
 1690514 Tattoo: RHK 5Z Birth Date: 01/26/12
 Sire: SAV CAMARO 9272 1552424
 Dam: PRIDE OF MODEL FARM 3T 1373758

Expected Progeny Difference (EPD)

Calving / Acc		Birth / Acc		Weaning / Acc		Yearling / Acc		Milk / Acc		Total Maternal / Acc	
0		3		44		76		23		44	

Igenity Profile

RFI: 5 Yield Grade: 6 Stayability: 7
 Tenderness: 9 Fat Thickness: 5 Mat. Calving Ease: 5
 Marbling Score: 6 Ribeye Area: 3 Docility: 6
 Quality Grade: 6 Heifer Preg Rate: 3 BVDV: NEG

Lot No: 23 **ANGUS** **Tag No: 15**

On Test Wt: 737.5 Birth Wt: 84 Adj Rib Eye (sq in): 11.7 Scrot (cm): 35.5
 Off Test Wt: 1207.5 Calving Ease: U Adj Marbling %: 2.9 Horn Cond: P
 ADG: 4.20 Adj Yr. Wt 1027.36 Avg Fat (mm): 8 Rump fat (mm): 9
 WDA: 2.81 WDA Index: 92 RFI: 1.15

Owner: WINDIMERE FARM, (TIM COOMBS), 97 JOLICURE RD., JOLICURE, NB, 506-536-3441

Name: WINDIMERE ZISLAND BOY
 1707099 Tattoo: EPIC 3Z Birth Date: 01/17/12
 Sire: ROYAL FORTE DRCC 6052S
 Dam: WINDIMERE QUALITY 19T

Expected Progeny Difference (EPD)

Calving / Acc	Birth / Acc	Weaning / Acc	Yearling / Acc	Milk / Acc	Total Maternal / Acc

Igenity Profile

RFI: 6 Yield Grade: 8 Stayability: 5
 Tenderness: 6 Fat Thickness: 8 Mat. Calving Ease: 5
 Marbling Score: 8 Ribeye Area: 7 Docility: 6
 Quality Grade: 8 Heifer Preg Rate: 7 BVDV: NEG

Lot No: 24 **SIMMENTAL** **Tag No: 98**

On Test Wt: 1195 Birth Wt: 75 Adj Rib Eye (sq in): 15.7 Scrot (cm): 37
 Off Test Wt: 1705 Calving Ease: U Adj Marbling %: 1.6 Horn Cond: P
 ADG: 4.55 Adj Yr. Wt 1478.21 Avg Fat (mm): 6 Rump fat (mm): 5
 WDA: 4.05 WDA Index: 114 RFI: 0.13

Owner: RAN MAR FARMS, (RANDALL MAILMAN), RR#1, HUBBARDS, NS, 902-275-4015

Name: RAN MAR RM CHIEF 1Z
 BPG779496 Tattoo: ZI 1Z Birth Date: 01/25/12
 Sire: RAN MAR STAR POWER 2X BPG753332
 Dam: TWIN-CHIEF TEMPEST 870T PG683809

Expected Progeny Difference (EPD)

Calving / Acc	Birth / Acc	Weaning / Acc	Yearling / Acc	Milk / Acc	Total Maternal / Acc
5.7	3.1	36.9	61.7	6.7	

Igenity Profile

RFI: 6 Yield Grade: 6 Stayability: 7
 Tenderness: 3 Fat Thickness: 5 Mat. Calving Ease: 6
 Marbling Score: 6 Ribeye Area: 5 Docility: 4
 Quality Grade: 6 Heifer Preg Rate: 5 BVDV: NEG

Lot No: 25 **SIMMENTAL** **Tag No: 115**

On Test Wt: 1150 Birth Wt: 100 Adj Rib Eye (sq in): 16.4 Scrot (cm): 41.5
 Off Test Wt: 1647.5 Calving Ease: U Adj Marbling %: 2.6 Horn Cond: P
 ADG: 4.44 Adj Yr. Wt 1435.17 Avg Fat (mm): 7 Rump fat (mm): 5
 WDA: 3.93 WDA Index: 111 RFI: 2.64

Owner: WINDY KNOLL FARM, (BRUCE PARSONS), RR#2, KINGSTON, NS, 902-765-8446

Name: WKF CROCKET 34Z
 PG765347 Tattoo: BEP 34Z Birth Date: 01/27/12
 Sire: LBR CROCKET R81 PTG671306
 Dam: WINDY KNOLL PHEONA 11P G634071

Expected Progeny Difference (EPD)

Calving / Acc	Birth / Acc	Weaning / Acc	Yearling / Acc	Milk / Acc	Total Maternal / Acc
1.4	6.4	50.7	86.4	9.1	

Igenity Profile

RFI: 3 Yield Grade: 5 Stayability: 7
 Tenderness: 3 Fat Thickness: 5 Mat. Calving Ease: 5
 Marbling Score: 6 Ribeye Area: 4 Docility: 3
 Quality Grade: 6 Heifer Preg Rate: 4 BVDV: NEG

Lot No: 26 **SIMMENTAL** **Tag No: 96**

On Test Wt: 1070 Birth Wt: 85 Adj Rib Eye (sq in): 14.7 Scrot (cm): 40.5
 Off Test Wt: 1517.5 Calving Ease: U Adj Marbling %: 2.5 Horn Cond: P
 ADG: 4.00 Adj Yr. Wt 1434.94 Avg Fat (mm): 7 Rump fat (mm): 6
 WDA: 3.93 WDA Index: 111 RFI: -0.97

Owner: RAN MAR FARMS, (RANDALL MAILMAN), RR#1, HUBBARDS, NS, 902-275-4015

Name: RAN MAR RM EXTRA 14Z
 BPG779497 Tattoo: ZI 14Z Birth Date: 02/29/12
 Sire: RAN MAR STAR POWER 2X BPG753332
 Dam: RAN MAR BLACK LADY 16P BPG621352

Expected Progeny Difference (EPD)

Calving / Acc	Birth / Acc	Weaning / Acc	Yearling / Acc	Milk / Acc	Total Maternal / Acc
6.5	2	35.3	61.1	4.5	

Igenity Profile

RFI: 5 Yield Grade: 6 Stayability: 7
 Tenderness: 3 Fat Thickness: 5 Mat. Calving Ease: 5
 Marbling Score: 6 Ribeye Area: 7 Docility: 6
 Quality Grade: 6 Heifer Preg Rate: 7 BVDV: NEG

Lot No: 27**SIMMENTAL****Tag No: 35**

On Test Wt: 1245 Birth Wt: 95 Adj Rib Eye (sq in): 14.7 Scrot (cm): 42.2
 Off Test Wt: 1732.5 Calving Ease: U Adj Marbling %: 2.1 Horn Cond: P
 ADG: 4.35 Adj Yr. Wt 1424.24 Avg Fat (mm): 7 Rump fat (mm): 6
 WDA: 3.90 WDA Index: 110 RFI: -0.05

Owner: HIDDEN HOLLOW FARM, (PETER & MARLENE GAUNCE), 587 VICTORIA RD, NEW SCOTLAND, NB, 506-383-4829

Name: HIDDEN H UGOSTAR
 PTG779784 Tattoo: GUB 134Z Birth Date: 01/02/12
 Sire: S-PAW RED TANNER 54T PG676522
 Dam: TODD'S FOOLS HAZEL 24S PG652122

Expected Progeny Difference (EPD)

Calving / Acc	Birth / Acc	Weaning / Acc	Yearling / Acc	Milk / Acc	Total Maternal / Acc
5.1	4.2	48	77.6	10.7	

Igenity Profile

RFI: 5 Yield Grade: 5 Stayability: 6
 Tenderness: 4 Fat Thickness: 5 Mat. Calving Ease: 5
 Marbling Score: 4 Ribeye Area: 5 Docility: 7
 Quality Grade: 4 Heifer Preg Rate: 5 BVDV: NEG

Lot No: 28**SIMMENTAL****Tag No: 36**

On Test Wt: 1150 Birth Wt: 98 Adj Rib Eye (sq in): 15.3 Scrot (cm): 40
 Off Test Wt: 1672.5 Calving Ease: U Adj Marbling %: 2.3 Horn Cond: P
 ADG: 4.67 Adj Yr. Wt 1378.02 Avg Fat (mm): 5 Rump fat (mm): 5
 WDA: 3.78 WDA Index: 107 RFI: 0.25

Owner: HIDDEN HOLLOW FARM, (PETER & MARLENE GAUNCE), 587 VICTORIA RD, NEW SCOTLAND, NB, 506-383-4829

Name: HIDDEN H TANNER
 PTG779785 Tattoo: GUB 138Z Birth Date: 01/03/12
 Sire: S-PAW RED TANNER 54T PG676522
 Dam: TODD'S FOOLS HAZEL 24S PG652122

Expected Progeny Difference (EPD)

Calving / Acc	Birth / Acc	Weaning / Acc	Yearling / Acc	Milk / Acc	Total Maternal / Acc
5.1	4.2	48	77.6	10.7	

Igenity Profile

RFI: 5 Yield Grade: 5 Stayability: 6
 Tenderness: 5 Fat Thickness: 5 Mat. Calving Ease: 5
 Marbling Score: 4 Ribeye Area: 7 Docility: 7
 Quality Grade: 4 Heifer Preg Rate: 7 BVDV: NEG

Lot No: 29**SIMMENTAL****Tag No: 40**

On Test Wt: 1075 Birth Wt: 96 Adj Rib Eye (sq in): 16.4 Scrot (cm): 40.5
 Off Test Wt: 1650 Calving Ease: U Adj Marbling %: 1.5 Horn Cond: P
 ADG: 5.13 Adj Yr. Wt 1375.00 Avg Fat (mm): 5 Rump fat (mm): 2
 WDA: 3.77 WDA Index: 106 RFI: 1.35

Owner: HIDDEN HOLLOW FARM, (PETER & MARLENE GAUNCE), 587 VICTORIA RD, NEW SCOTLAND, NB, 506-383-4829

Name: HIDDEN H TYLER 147Z

PG771719

Tattoo: GUB 147Z

Birth Date: 01/08/12

Sire: HIDDEN H TYLER

PG725488

Dam: GLARRO XLENCE

732933

Expected Progeny Difference (EPD)

Calving / Acc	Birth / Acc	Weaning / Acc	Yearling / Acc	Milk / Acc	Total Maternal / Acc
4.6	2.8	41.7	71.1	6.6	

Igenity Profile

RFI: 3 Yield Grade: 4 Stayability: 5
 Tenderness: 3 Fat Thickness: 4 Mat. Calving Ease: 5
 Marbling Score: 5 Ribeye Area: 5 Docility: 6
 Quality Grade: 5 Heifer Preg Rate: 5 BVDV: NEG

Lot No: 30**SIMMENTAL****Tag No: 65**

On Test Wt: 1065 Birth Wt: 95 Adj Rib Eye (sq in): 15.9 Scrot (cm): 41.5
 Off Test Wt: 1607.5 Calving Ease: U Adj Marbling %: 2.2 Horn Cond: P
 ADG: 4.84 Adj Yr. Wt 1361.34 Avg Fat (mm): 5 Rump fat (mm): 5
 WDA: 3.73 WDA Index: 105 RFI: 1.96

Owner: (TREVOR & PAULA HILTZ), 2295 Brooklyn St, AYLESFORD, NS, 902-847-0017

Name: ROSS CREEK ZACH

BPG763844

Tattoo: TVH 13Z

Birth Date: 01/15/12

Sire: REMINGTON ON TARGET 2S

BPTG658801

Dam: ROSS CREEK RED SENSATION

PG654536

Expected Progeny Difference (EPD)

Calving / Acc	Birth / Acc	Weaning / Acc	Yearling / Acc	Milk / Acc	Total Maternal / Acc
5.6	3.2	39.4	76.3	6.6	

Igenity Profile

RFI: Yield Grade: Stayability:
 Tenderness: Fat Thickness: Mat. Calving Ease:
 Marbling Score: Ribeye Area: Docility:
 Quality Grade: Heifer Preg Rate: BVDV:

Lot No: 31**SIMMENTAL****Tag No: 38**

On Test Wt: 1120 Birth Wt: 94 Adj Rib Eye (sq in): 14.6 Scrot (cm): 42.8
 Off Test Wt: 1602.5 Calving Ease: U Adj Marbling %: 2 Horn Cond: P
 ADG: 4.31 Adj Yr. Wt 1360.26 Avg Fat (mm): 8 Rump fat (mm): 6
 WDA: 3.73 WDA Index: 105 RFI: 0.55

Owner: HIDDEN HOLLOW FARM, (PETER & MARLENE GAUNCE), 587 VICTORIA RD, NEW SCOTLAND, NB, 506-383-4829

Name: HIDDEN H EZOZO

PG764643

Tattoo: GUB 152Z

Birth Date: 01/16/12

Sire: S-PAW RED TANNER 54T

PG676522

Dam: TODD'S FOOLS HAZEL 24S

PG652122

Expected Progeny Difference (EPD)

Calving / Acc	Birth / Acc	Weaning / Acc	Yearling / Acc	Milk / Acc	Total Maternal / Acc
5.1	4.2	48	77.6	10.7	

Igenity Profile

RFI: 5 Yield Grade: 5 Stayability: 6
 Tenderness: 4 Fat Thickness: 4 Mat. Calving Ease: 5
 Marbling Score: 4 Ribeye Area: 4 Docility: 6
 Quality Grade: 4 Heifer Preg Rate: 4 BVDV: NEG

Lot No: 32**SIMMENTAL****Tag No: 37**

On Test Wt: 1020 Birth Wt: 95 Adj Rib Eye (sq in): 15.1 Scrot (cm): 41
 Off Test Wt: 1567.5 Calving Ease: U Adj Marbling %: 2.5 Horn Cond: P
 ADG: 4.89 Adj Yr. Wt 1355.78 Avg Fat (mm): 6 Rump fat (mm): 7
 WDA: 3.71 WDA Index: 105 RFI: -1.02

Owner: HIDDEN HOLLOW FARM, (PETER & MARLENE GAUNCE), 587 VICTORIA RD, NEW SCOTLAND, NB, 506-383-4829

Name: HIDDEN H MISTER

PTG779786

Tattoo: GUB 156Z

Birth Date: 01/24/12

Sire: S-PAW RED TANNER 54T

PG676522

Dam: TODD'S FOOLSA HAZEL 24S

PG652122

Expected Progeny Difference (EPD)

Calving / Acc	Birth / Acc	Weaning / Acc	Yearling / Acc	Milk / Acc	Total Maternal / Acc
5.1	4.2	48	77.6	10.7	

Igenity Profile

RFI: 5 Yield Grade: 7 Stayability: 4
 Tenderness: 3 Fat Thickness: 7 Mat. Calving Ease: 7
 Marbling Score: 3 Ribeye Area: 5 Docility: 6
 Quality Grade: 3 Heifer Preg Rate: 5 BVDV: NEG

Lot No: 33 **SIMMENTAL** **Tag No: 43**

On Test Wt: 1062.5 Birth Wt: 78 Adj Rib Eye (sq in): 13.8 Scrot (cm): 38.5
 Off Test Wt: 1547.5 Calving Ease: U Adj Marbling %: 3.5 Horn Cond: P
 ADG: 4.33 Adj Yr. Wt 1354.53 Avg Fat (mm): 7 Rump fat (mm): 7
 WDA: 3.71 WDA Index: 105 RFI: 1.64

Owner: COVEACRES SIMMENTAL, (JAMIE MACPHEE), 6342 RTE 19, RR2, CORNWALL, PE, 902-675-2511

Name: COVEACRES BOOMER 15Z
 BPG774852 Tattoo: COVE 15Z Birth Date: 01/29/12
 Sire: RC CLUB KING 040R BPTG711827
 Dam: COVEACRES MS CAESAR 1W PG719374

Expected Progeny Difference (EPD)

Calving / Acc	Birth / Acc	Weaning / Acc	Yearling / Acc	Milk / Acc	Total Maternal / Acc
8.6	0.4	39.9	75.8	6	

Igenity Profile

RFI: 4 Yield Grade: 4 Stayability: 7
 Tenderness: 4 Fat Thickness: 4 Mat. Calving Ease: 6
 Marbling Score: 6 Ribeye Area: 6 Docility: 8
 Quality Grade: 6 Heifer Preg Rate: 6 BVDV: NEG

Lot No: 34 **SIMMENTAL** **Tag No: 41**

On Test Wt: 1135 Birth Wt: 87 Adj Rib Eye (sq in): 14.8 Scrot (cm): 39.5
 Off Test Wt: 1597.5 Calving Ease: U Adj Marbling %: 1.7 Horn Cond: P
 ADG: 4.13 Adj Yr. Wt 1322.19 Avg Fat (mm): 3 Rump fat (mm): 4
 WDA: 3.62 WDA Index: 102 RFI: 0.80

Owner: HIDDEN HOLLOW FARM, (PETER & MARLENE GAUNCE), 587 VICTORIA RD, NEW SCOTLAND, NB, 506-383-4829

Name: HIDDEN H BOULDER
 PG771716 Tattoo: GUB 141Z Birth Date: 01/05/12
 Sire: THSF FREEDOM 300N PTG634923
 Dam: HIDDEN-H EXCLUSIVE PG692266

Expected Progeny Difference (EPD)

Calving / Acc	Birth / Acc	Weaning / Acc	Yearling / Acc	Milk / Acc	Total Maternal / Acc
4.1	3.9	40.5	79.8	0.5	

Igenity Profile

RFI: 6 Yield Grade: 5 Stayability: 6
 Tenderness: 3 Fat Thickness: 5 Mat. Calving Ease: 5
 Marbling Score: 6 Ribeye Area: 7 Docility: 7
 Quality Grade: 6 Heifer Preg Rate: 7 BVDV: NEG

Lot No: 35 **SIMMENTAL** **Tag No: 85**

On Test Wt: 1105 Birth Wt: 93 Adj Rib Eye (sq in): 16.2 Scrot (cm): 37.5
 Off Test Wt: 1525 Calving Ease: U Adj Marbling %: 2.6 Horn Cond: P
 ADG: 3.75 Adj Yr. Wt 1309.71 Avg Fat (mm): 8 Rump fat (mm): 8
 WDA: 3.59 WDA Index: 101 RFI: -1.64

Owner: MATHESON FARMS, (BRENT, BRADY & JAKE MATHESON), RR#3, ST. PETERS BAY, PE, 902-961-2166

Name: BJM MR. TRADEMARK 2Z
 BPG762397 Tattoo: BJM 2Z Birth Date: 01/21/12
 Sire: GWS/SCF RENDITION BPG730205
 Dam: BJM MS. LEGACY 1X BPG727702

Expected Progeny Difference (EPD)					
Calving / Acc	Birth / Acc	Weaning / Acc	Yearling / Acc	Milk / Acc	Total Maternal / Acc
7.8	1.2	33	55.2	6.9	

Igenity Profile

RFI: 3 Yield Grade: 6 Stayability: 5
 Tenderness: 5 Fat Thickness: 5 Mat. Calving Ease: 6
 Marbling Score: 5 Ribeye Area: 8 Docility: 6
 Quality Grade: 5 Heifer Preg Rate: 8 BVDV: NEG

Lot No: 36 **SIMMENTAL** **Tag No: 59**

On Test Wt: 1100 Birth Wt: 98 Adj Rib Eye (sq in): 15.9 Scrot (cm): 41
 Off Test Wt: 1585 Calving Ease: U Adj Marbling %: 2.6 Horn Cond: P
 ADG: 4.33 Adj Yr. Wt 1302.98 Avg Fat (mm): 4 Rump fat (mm): 5
 WDA: 3.57 WDA Index: 101 RFI: -0.34

Owner: MELVERN SIMMENTALS, (BILL & RICHARD ARMSTRONG), RR#2, KINGSTON, NS, 902-765-6620

Name: MELVERN AMMO 51Z
 PG777081 Tattoo: RDO 51Z Birth Date: 01/02/12
 Sire: BCLR AMMO W513-1 BPTG762731
 Dam: MELVERN BUILDER 38S PG679989

Expected Progeny Difference (EPD)					
Calving / Acc	Birth / Acc	Weaning / Acc	Yearling / Acc	Milk / Acc	Total Maternal / Acc
3.6	2.7	32.6	56.9	3.7	

Igenity Profile

RFI: 4 Yield Grade: 2 Stayability: 4
 Tenderness: 4 Fat Thickness: 4 Mat. Calving Ease: 6
 Marbling Score: 5 Ribeye Area: 8 Docility: 6
 Quality Grade: 5 Heifer Preg Rate: 8 BVDV: NEG

Lot No: 37**SIMMENTAL****Tag No: 97**

On Test Wt: 977.5 Birth Wt: 88 Adj Rib Eye (sq in): 13.1 Scrot (cm): 40
 Off Test Wt: 1472.5 Calving Ease: U Adj Marbling %: 2.1 Horn Cond: P
 ADG: 4.42 Adj Yr. Wt 1298.22 Avg Fat (mm): 4 Rump fat (mm): 4
 WDA: 3.56 WDA Index: 100 RFI: 1.34

Owner: RAN MAR FARMS, (RANDALL MAILMAN), RR#1, HUBBARDS, NS, 902-275-4015

Name: RAN MAR RM MAX 3Z
 PG779495 Tattoo: ZI 3Z Birth Date: 02/01/12
 Sire: MCC SIRLOIN 36G PTG390124
 Dam: TWIN-CHIEF TILLY 167T PG683762

Expected Progeny Difference (EPD)

Calving / Acc	Birth / Acc	Weaning / Acc	Yearling / Acc	Milk / Acc	Total Maternal / Acc
6.1	2.4	35.9	66.9	13.2	

Igenity Profile

RFI: 5 Yield Grade: 4 Stayability: 6
 Tenderness: 4 Fat Thickness: 4 Mat. Calving Ease: 5
 Marbling Score: 5 Ribeye Area: 5 Docility: 5
 Quality Grade: 5 Heifer Preg Rate: 5 BVDV: NEG

Lot No: 38**SIMMENTAL****Tag No: 113**

On Test Wt: 1145 Birth Wt: 80 Adj Rib Eye (sq in): 14.8 Scrot (cm): 44.2
 Off Test Wt: 1572.5 Calving Ease: U Adj Marbling %: 1.8 Horn Cond: P
 ADG: 3.82 Adj Yr. Wt 1289.80 Avg Fat (mm): 4 Rump fat (mm): 3
 WDA: 3.53 WDA Index: 100 RFI: -0.32

Owner: WINDY KNOLL FARM, (BRUCE PARSONS), RR#2, KINGSTON, NS, 902-765-8446

Name: WKF AGASSIZ 3Z
 P765357 Tattoo: LAP 3Z Birth Date: 01/01/12
 Sire: KOP AGASSIZ 31S P660047
 Dam: WINDY KNOLL MS MANIA 3U 745898

Expected Progeny Difference (EPD)

Calving / Acc	Birth / Acc	Weaning / Acc	Yearling / Acc	Milk / Acc	Total Maternal / Acc
4.2	4.5	37.5	60.9	11.9	

Igenity Profile

RFI: 4 Yield Grade: 6 Stayability: 6
 Tenderness: 4 Fat Thickness: 5 Mat. Calving Ease: 4
 Marbling Score: 5 Ribeye Area: 5 Docility: 5
 Quality Grade: 5 Heifer Preg Rate: 5 BVDV: NEG

Lot No: 39 **SIMMENTAL** **Tag No: 61**

On Test Wt: 1032.5 Birth Wt: 105 Adj Rib Eye (sq in): 14.6 Scrot (cm): 41.5
 Off Test Wt: 1530 Calving Ease: U Adj Marbling %: 1.8 Horn Cond: P
 ADG: 4.44 Adj Yr. Wt 1280.85 Avg Fat (mm): 6 Rump fat (mm): 3
 WDA: 3.51 WDA Index: 99 RFI: 1.56

Owner: MELVERN SIMMENTALS, (BILL & RICHARD ARMSTRONG), RR#2, KINGSTON, NS, 902-765-6620

Name: MELVERN ENTICER 99Z
 PG777082 Tattoo: RDO 99Z Birth Date: 01/10/12
 Sire: EDN WHOPPER 25W BPG712389
 Dam: MELVERN MS TANK 202W PG733568

Expected Progeny Difference (EPD)

Calving / Acc	Birth / Acc	Weaning / Acc	Yearling / Acc	Milk / Acc	Total Maternal / Acc
4.5	3.8	46.3	78.9	8.2	

Igenity Profile

RFI: 4 Yield Grade: 5 Stayability: 8
 Tenderness: 7 Fat Thickness: 4 Mat. Calving Ease: 4
 Marbling Score: 4 Ribeye Area: 5 Docility: 5
 Quality Grade: 4 Heifer Preg Rate: 5 BVDV: NEG

Lot No: 40 **SIMMENTAL** **Tag No: 64**

On Test Wt: 1020 Birth Wt: 80 Adj Rib Eye (sq in): 16.8 Scrot (cm): 40.5
 Off Test Wt: 1480 Calving Ease: U Adj Marbling %: 2.1 Horn Cond: P
 ADG: 4.11 Adj Yr. Wt 1280.09 Avg Fat (mm): 5 Rump fat (mm): 5
 WDA: 3.51 WDA Index: 99 RFI: -1.65

Owner: (JEFF MORSE), 1119 Harmony Rd. RR#5, KINGSTON, NS, 902-847-9718

Name: DJ'S MR DECOY 31Z
 PG779247 Tattoo: HARJ 31Z Birth Date: 01/24/12
 Sire: LCHMN BODY BUILDER 7303F PG502869
 Dam: DJ'S MS RED LITE 22P G631229

Expected Progeny Difference (EPD)

Calving / Acc	Birth / Acc	Weaning / Acc	Yearling / Acc	Milk / Acc	Total Maternal / Acc
1.9	4.6	33	58.6	10.4	

Igenity Profile

RFI: 5 Yield Grade: 5 Stayability: 7
 Tenderness: 1 Fat Thickness: 5 Mat. Calving Ease: 5
 Marbling Score: 6 Ribeye Area: 6 Docility: 4
 Quality Grade: 6 Heifer Preg Rate: 6 BVDV: NEG

Lot No: 41 **SIMMENTAL** **Tag No: 26**

On Test Wt: 1110 Birth Wt: 94 Adj Rib Eye (sq in): 16.2 Scrot (cm): 44.5
 Off Test Wt: 1602.5 Calving Ease: U Adj Marbling %: 1.8 Horn Cond: H
 ADG: 4.40 Adj Yr. Wt 1271.55 Avg Fat (mm): 6 Rump fat (mm): 7
 WDA: 3.48 WDA Index: 98 RFI: -2.80

Owner: MACLEOD'S SIMMENTALS, (BILL MACLEOD), 63 TAILSMAN CRES., FREDERICTON, NB, 506-459-7066

Name: MACL LINCOLN 368Y
 G773815 Tattoo: MACL 368Y Birth Date: 12/17/11
 Sire: MELVERN FREEDOM 7U PG703541
 Dam: MACL 04E LEEZA 166R P652182

Expected Progeny Difference (EPD)

Calving / Acc	Birth / Acc	Weaning / Acc	Yearling / Acc	Milk / Acc	Total Maternal / Acc
2.9	4.2	40.1	71.8	9.9	

Igenity Profile

RFI: 3 Yield Grade: 4 Stayability: 7
 Tenderness: 3 Fat Thickness: 4 Mat. Calving Ease: 4
 Marbling Score: 4 Ribeye Area: 7 Docility: 6
 Quality Grade: 4 Heifer Preg Rate: 7 BVDV: NEG

Lot No: 42 **SIMMENTAL** **Tag No: 112**

On Test Wt: 1042.5 Birth Wt: 85 Adj Rib Eye (sq in): 16.1 Scrot (cm): 41
 Off Test Wt: 1505 Calving Ease: U Adj Marbling %: 2 Horn Cond: H
 ADG: 4.13 Adj Yr. Wt 1248.47 Avg Fat (mm): 6 Rump fat (mm): 5
 WDA: 3.42 WDA Index: 97 RFI: 0.13

Owner: WINDY KNOLL FARM, (BRUCE PARSONS), RR#2, KINGSTON, NS, 902-765-8446

Name: WKF BEST BOY 16Z
 779894 Tattoo: BEP 16Z Birth Date: 01/06/12
 Sire: PWM SA BEST BOY 1210S 669368
 Dam: WINDY KNOLL SATISFACTION T662747

Expected Progeny Difference (EPD)

Calving / Acc	Birth / Acc	Weaning / Acc	Yearling / Acc	Milk / Acc	Total Maternal / Acc
4.1	5	41.2	68	15.6	

Igenity Profile

RFI: 5 Yield Grade: 4 Stayability: 3
 Tenderness: 3 Fat Thickness: 5 Mat. Calving Ease: 6
 Marbling Score: 4 Ribeye Area: 6 Docility: 5
 Quality Grade: 4 Heifer Preg Rate: 6 BVDV: NEG

Lot No: 43**SIMMENTAL****Tag No: 39**

On Test Wt: 1062.5 Birth Wt: 86 Adj Rib Eye (sq in): 13.6 Scrot (cm): 40.5
 Off Test Wt: 1510 Calving Ease: U Adj Marbling %: 2.6 Horn Cond: P
 ADG: 4.00 Adj Yr. Wt 1246.95 Avg Fat (mm): 5 Rump fat (mm): 5
 WDA: 3.42 WDA Index: 97 RFI: 0.31

Owner: HIDDEN HOLLOW FARM, (PETER & MARLENE GAUNCE), 587 VICTORIA RD, NEW SCOTLAND, NB, 506-383-4829

Name: HIDDEN H FREEDOM 140Z

PG771715

Tattoo: GUB 140Z

Birth Date: 01/04/12

Sire: THSF FREEDOM 300N

PTG634923

Dam: HIDDEN H X ACTLY

PG725495

Expected Progeny Difference (EPD)

Calving / Acc	Birth / Acc	Weaning / Acc	Yearling / Acc	Milk / Acc	Total Maternal / Acc
4.9	2.8	40.9	83.7	-1.4	

Igenity Profile

RFI: 4 Yield Grade: 5 Stayability: 7
 Tenderness: 3 Fat Thickness: 5 Mat. Calving Ease: 7
 Marbling Score: 6 Ribeye Area: 7 Docility: 6
 Quality Grade: 6 Heifer Preg Rate: 7 BVDV: NEG

Lot No: 44**SIMMENTAL****Tag No: 58**

On Test Wt: 1032.5 Birth Wt: 99 Adj Rib Eye (sq in): 14.2 Scrot (cm): 41
 Off Test Wt: 1480 Calving Ease: U Adj Marbling %: 2 Horn Cond: P
 ADG: 4.00 Adj Yr. Wt 1230.52 Avg Fat (mm): 4 Rump fat (mm): 3
 WDA: 3.37 WDA Index: 95 RFI: 0.37

Owner: MELVERN SIMMENTALS, (BILL & RICHARD ARMSTRONG), RR#2, KINGSTON, NS, 902-765-6620

Name: MELVERN TANKER 77Z

BPG777080

Tattoo: RDO 77Z

Birth Date: 01/07/12

Sire: TNT TANKER U263

BPG727549

Dam: MELVERN MS BUILDER 93T

PG698226

Expected Progeny Difference (EPD)

Calving / Acc	Birth / Acc	Weaning / Acc	Yearling / Acc	Milk / Acc	Total Maternal / Acc
4.4	3.3	42.9	69.3	5.8	

Igenity Profile

RFI: 5 Yield Grade: 5 Stayability: 7
 Tenderness: 3 Fat Thickness: 4 Mat. Calving Ease: 5
 Marbling Score: 5 Ribeye Area: 7 Docility: 4
 Quality Grade: 5 Heifer Preg Rate: 7 BVDV: NEG

Lot No: 45**LIMOUSIN****Tag No: 4**

On Test Wt: 1047.5 Birth Wt: 103 Adj Rib Eye (sq in): 15.3 Scrot (cm): 37
 Off Test Wt: 1390 Calving Ease: U Adj Marbling %: 1.6 Horn Cond: P
 ADG: 3.06 Adj Yr. Wt 1219.59 Avg Fat (mm): 5 Rump fat (mm): 7
 WDA: 3.34 WDA Index: 111 RFI: 0.39

Owner: OTHBERG LIMOUSIN, (FRITZ & SANDRA OTHBERG), 1749 RTE 880, SUMMERFIELD, NB, 506-433-5245

Name: OTHBERGS ZORRO 18Z

CPM0209745

Tattoo: FFP 18Z

Birth Date: 01/30/12

Sire: RICHMOND TODD SRD 133T

CPM0191500

Dam: OTHBERGS LOVELY

CPF0141543

Expected Progeny Difference (EPD)

Calving / Acc	Birth / Acc	Weaning / Acc	Yearling / Acc	Milk / Acc	Total Maternal / Acc	
4.3	0	2.6	45.4	74.8	19.3	42

Igenity Profile

RFI: 5 Yield Grade: 5 Stayability: 5
 Tenderness: 6 Fat Thickness: 5 Mat. Calving Ease: 6
 Marbling Score: 5 Ribeye Area: 6 Docility: 6
 Quality Grade: 5 Heifer Preg Rate: 6 BVDV: NEG

Lot No: 46**LIMOUSIN****Tag No: 10**

On Test Wt: 847.5 Birth Wt: 88 Adj Rib Eye (sq in): 16 Scrot (cm): 34.5
 Off Test Wt: 1255 Calving Ease: U Adj Marbling %: 3.3 Horn Cond: P
 ADG: 3.64 Adj Yr. Wt 1208.64 Avg Fat (mm): 6 Rump fat (mm): 8
 WDA: 3.31 WDA Index: 110 RFI: 0.13

Owner: OTHBERG LIMOUSIN, (FRITZ & SANDRA OTHBERG), 1749 RTE 880, SUMMERFIELD, NB, 506-433-5245

Name: OTHBERGS ZURICH 29Z

CPM0208973

Tattoo: FFP 29Z

Birth Date: 03/07/12

Sire: RICHMOND TODD SRD 133T

CPM0191500

Dam: OTHBERGS WANDA

CPF0194669

Expected Progeny Difference (EPD)

Calving / Acc	Birth / Acc	Weaning / Acc	Yearling / Acc	Milk / Acc	Total Maternal / Acc	
5.6	0	3	51.6	86.9	23.9	49.7

Igenity Profile

RFI: 4 Yield Grade: 5 Stayability: 5
 Tenderness: 4 Fat Thickness: 5 Mat. Calving Ease: 5
 Marbling Score: 5 Ribeye Area: 5 Docility: 7
 Quality Grade: 5 Heifer Preg Rate: 5 BVDV: NEG

Lot No: 47 **LIMOUSIN** **Tag No: 91**

On Test Wt: 905 Birth Wt: 110 Adj Rib Eye (sq in): 16 Scrot (cm): 36.5
 Off Test Wt: 1285 Calving Ease: U Adj Marbling %: 2.3 Horn Cond: P
 ADG: 3.39 Adj Yr. Wt 1141.18 Avg Fat (mm): 4 Rump fat (mm): 5
 WDA: 3.13 WDA Index: 104 RFI: 2.93

Owner: BLUE DIAMOND POLLED LIMOUSIN, (BARB MCLAUGHLIN), 283 MCKAY'S SIDING RD, STEWIACKE, NS, 902-639-2064

Name: BJM POLLED ZACK
 CPM0210968 Tattoo: BJM 2Z Birth Date: 02/04/12
 Sire: MAVERICK 69X NPM1541731
 Dam: KING'S HI KATE CPF0137791

Expected Progeny Difference (EPD)						
Calving / Acc	Birth / Acc	Weaning / Acc	Yearling / Acc	Milk / Acc	Total Maternal / Acc	
13.1	0	1.5	42.3	77.5	19	40.2

Ignity Profile

RFI: Yield Grade: Stayability:
 Tenderness: Fat Thickness: Mat. Calving Ease:
 Marbling Score: Ribeye Area: Docility:
 Quality Grade: Heifer Preg Rate: BVDV:

Lot No: 48 **LIMOUSIN** **Tag No: 8**

On Test Wt: 767.5 Birth Wt: 76 Adj Rib Eye (sq in): 16.4 Scrot (cm): 32
 Off Test Wt: 1165 Calving Ease: U Adj Marbling %: 3 Horn Cond: P
 ADG: 3.55 Adj Yr. Wt 1119.01 Avg Fat (mm): 6 Rump fat (mm): 8
 WDA: 3.07 WDA Index: 102 RFI: 2.59

Owner: OTHBERG LIMOUSIN, (FRITZ & SANDRA OTHBERG), 1749 RTE 880, SUMMERFIELD, NB, 506-433-5245

Name: OTHBERGS ZOOMER
 CPM0208974 Tattoo: FFP 28Z Birth Date: 03/06/12
 Sire: IVY'S XECUTIVE CLASS 24X CPM0202865
 Dam: OTHBERGS X-IZE TAX CPF0203077

Expected Progeny Difference (EPD)					
Calving / Acc	Birth / Acc	Weaning / Acc	Yearling / Acc	Milk / Acc	Total Maternal / Acc
	2.7	45.2	81.1	20.8	43.4

Ignity Profile

RFI: 5 Yield Grade: 6 Stayability: 5
 Tenderness: 1 Fat Thickness: 7 Mat. Calving Ease: 5
 Marbling Score: 6 Ribeye Area: 5 Docility: 6
 Quality Grade: 6 Heifer Preg Rate: 5 BVDV: NEG

Lot No: 49**LIMOUSIN****Tag No: 95**

On Test Wt: 900 Birth Wt: 82 Adj Rib Eye (sq in): 14.2 Scrot (cm): 35
 Off Test Wt: 1300 Calving Ease: U Adj Marbling %: 2.2 Horn Cond: P
 ADG: 3.57 Adj Yr. Wt 1111.24 Avg Fat (mm): 5 Rump fat (mm): 5
 WDA: 3.04 WDA Index: 101 RFI: 0.51

Owner: CENTERBROOK LIMOUSIN, (LESTER & SHARON CRAIG), RR#1, NORTH TRYON, PE, 902-855-2033

Name: CENTERBROOK ZANE

CPM0212742

Tattoo: SLP 90Z

Birth Date: 01/19/12

Sire: RICHMOND TRIBE SRD 161T

CPM0191510

Dam: CENTERBROOK PRISCILLA

CPF0173342

Expected Progeny Difference (EPD)

Calving / Acc		Birth / Acc		Weaning / Acc		Yearling / Acc		Milk / Acc		Total Maternal / Acc	
5.5	0	2.7		38.9		61.3		17.4			

Igenity Profile

RFI: 5 Yield Grade: 6 Stayability: 5
 Tenderness: 3 Fat Thickness: 7 Mat. Calving Ease: 4
 Marbling Score: 7 Ribeye Area: 4 Docility: 6
 Quality Grade: 7 Heifer Preg Rate: 4 BVDV: NEG

Lot No: 50**LIMOUSIN****Tag No: 6**

On Test Wt: 970 Birth Wt: 88 Adj Rib Eye (sq in): 13.1 Scrot (cm): 37.5
 Off Test Wt: 1307.5 Calving Ease: U Adj Marbling %: 1.8 Horn Cond: P
 ADG: 3.01 Adj Yr. Wt 1104.72 Avg Fat (mm): 4 Rump fat (mm): 4
 WDA: 3.03 WDA Index: 100 RFI: -1.22

Owner: OTHBERG LIMOUSIN, (FRITZ & SANDRA OTHBERG), 1749 RTE 880, SUMMERFIELD, NB, 506-433-5245

Name: OTHBERGS ZACHERY

CPM0208965

Tattoo: FFP 11Z

Birth Date: 01/14/12

Sire: RICHMOND TODD SRD 133T

CPM0191500

Dam: OTHBERGS MIRACLE

CPF0150576

Expected Progeny Difference (EPD)

Calving / Acc		Birth / Acc		Weaning / Acc		Yearling / Acc		Milk / Acc		Total Maternal / Acc	
7.9	0	1		40.9		70.3		21.7		42.2	

Igenity Profile

RFI: 5 Yield Grade: 4 Stayability: 7
 Tenderness: 3 Fat Thickness: 5 Mat. Calving Ease: 6
 Marbling Score: 6 Ribeye Area: 5 Docility: 6
 Quality Grade: 6 Heifer Preg Rate: 5 BVDV: NEG

Lot No: 51**LIMOUSIN****Tag No: 92**

On Test Wt: 735 Birth Wt: 90 Adj Rib Eye (sq in): 15.5 Scrot (cm): 35.2
 Off Test Wt: 1165 Calving Ease: U Adj Marbling %: 2.1 Horn Cond: P
 ADG: 3.84 Adj Yr. Wt 1052.54 Avg Fat (mm): 6 Rump fat (mm): 5
 WDA: 2.88 WDA Index: 96 RFI: -1.35

Owner: BLUE DIAMOND POLLED LIMOUSIN, (BARB MCLAUGHLIN), 283 MCKAY'S SIDING RD, STEWIACKE, NS, 902-639-2064

Name: BJM POLLED 3Z
 CPM0210969 Tattoo: BJM 3Z Birth Date: 02/11/12
 Sire: MAVERICK 69X CPM0203554
 Dam: BJM POLLED GOOD AS GOLD CPF0109373

Expected Progeny Difference (EPD)

Calving / Acc		Birth / Acc		Weaning / Acc		Yearling / Acc		Milk / Acc		Total Maternal / Acc	

Igenity Profile

RFI: Yield Grade: Stayability:
 Tenderness: Fat Thickness: Mat. Calving Ease:
 Marbling Score: Ribeye Area: Docility:
 Quality Grade: Heifer Preg Rate: BVDV:

Lot No: 52**HEREFORD****Tag No: 27**

On Test Wt: 1067.5 Birth Wt: 88 Adj Rib Eye (sq in): 12.4 Scrot (cm): 38.5
 Off Test Wt: 1522.5 Calving Ease: U Adj Marbling %: 2.6 Horn Cond: P
 ADG: 4.06 Adj Yr. Wt 1265.86 Avg Fat (mm): 7 Rump fat (mm): 9
 WDA: 3.47 WDA Index: 109 RFI: -0.72

Owner: (MILTON LYNDS), RR#2, UPPER STEWIACKE, NS, 902-671-2253

Name: LYOMING SID 1Z
 C02967127 Tattoo: ANBA 1Z Birth Date: 01/07/12
 Sire: EARLYBIRD WINDSOR 11W P C02925693
 Dam: LYOMING NEW STACEY 1S P C02878268

Expected Progeny Difference (EPD)

Calving / Acc		Birth / Acc		Weaning / Acc		Yearling / Acc		Milk / Acc		Total Maternal / Acc	
-3.1	0.05	5.8	0.33	51.7	0.22	88.8	0.2	15.7	0.08	41.6	

Igenity Profile

RFI: Yield Grade: Stayability:
 Tenderness: Fat Thickness: Mat. Calving Ease:
 Marbling Score: Ribeye Area: Docility:
 Quality Grade: Heifer Preg Rate: BVDV:

Lot No: 53**HEREFORD****Tag No: 90**

On Test Wt: 1000 Birth Wt: 87 Adj Rib Eye (sq in): 13.5 Scrot (cm): 38.5
 Off Test Wt: 1492.5 Calving Ease: U Adj Marbling %: 2.8 Horn Cond: P
 ADG: 4.40 Adj Yr. Wt 1226.94 Avg Fat (mm): 7 Rump fat (mm): 5
 WDA: 3.36 WDA Index: 105 RFI: -0.74

Owner: WILLOW POND FARM, (LARRY & PAT WARD), 9276 MOOSE RIVER RD RR#2, MIDDLE MUSQUIDOBOIT, NS, 902-384-2878

Name: WILLOW-POND 21W ZEB 12Z

C02966641

Tattoo: ALMU 12Z

Birth Date: 01/02/12

Sire: HARVIE WHIRL WIND ET 21W

C02927238

Dam: WILLOW POND 10N REBECCA 12R

C02860660

Expected Progeny Difference (EPD)

Calving / Acc		Birth / Acc		Weaning / Acc		Yearling / Acc		Milk / Acc		Total Maternal / Acc	
-1.5	0.05	6.4	0.35	56.8	0.25	94.3	0.24	16.4	0.1	44.8	

igenity Profile

RFI: 6 Yield Grade: 7 Stayability: 6
 Tenderness: 6 Fat Thickness: 5 Mat. Calving Ease: 7
 Marbling Score: 5 Ribeye Area: 4 Docility: 5
 Quality Grade: 5 Heifer Preg Rate: 4 BVDV: NEG

Lot No: 54**HEREFORD****Tag No: 12**

On Test Wt: 1000 Birth Wt: 108 Adj Rib Eye (sq in): 13.3 Scrot (cm): 36.5
 Off Test Wt: 1400 Calving Ease: U Adj Marbling %: 1.8 Horn Cond: P
 ADG: 3.57 Adj Yr. Wt 1193.93 Avg Fat (mm): 7 Rump fat (mm): 7
 WDA: 3.27 WDA Index: 103 RFI: -0.19

Owner: THUNDERBROOK FARMS, (BRIAN & JOAN TRUEMAN), BOX 252 RR#4, AMHERST, NS, 902-667-1137

Name: THUNDERBROOK STEADY & READY 4Z

C02967616

Tattoo: TBC 4Z

Birth Date: 01/18/12

Sire: TH 75J 243R BAILOUT 144U ET

P C02954344

Dam: THUNDERBROOK TRIXIE 1T

P C02895939

Expected Progeny Difference (EPD)

Calving / Acc		Birth / Acc		Weaning / Acc		Yearling / Acc		Milk / Acc		Total Maternal / Acc	
-1.3	0.09	5.8	0.35	54.5	0.21	88.7	0.21	17.8	0.1	45.1	

igenity Profile

RFI: 3 Yield Grade: 6 Stayability: 6
 Tenderness: 6 Fat Thickness: 5 Mat. Calving Ease: 5
 Marbling Score: 5 Ribeye Area: 4 Docility: 6
 Quality Grade: 5 Heifer Preg Rate: 4 BVDV: NEG

Lot No: 55 **HEREFORD** **Tag No: 89**

On Test Wt: 975 Birth Wt: 85 Adj Rib Eye (sq in): 11.6 Scrot (cm): 37
 Off Test Wt: 1392.5 Calving Ease: U Adj Marbling %: 2.5 Horn Cond: P
 ADG: 3.73 Adj Yr. Wt 1142.16 Avg Fat (mm): 8 Rump fat (mm): 9
 WDA: 3.13 WDA Index: 98 RFI: -1.54

Owner: WILLOW POND FARM, (LARRY & PAT WARD), 9276 MOOSE RIVER RD RR#2, MIDDLE MUSQUIDOBOIT, NS, 902-384-2878

Name: WILLOW-POND 21W ZULU 9Z
 C02966639 Tattoo: ALMU 9Z Birth Date: 01/01/12
 Sire: HARVIE WHIRL WIND ET 21W C02927238
 Dam: THUNDERBROOK RAZZLE DAZZLE 2R C02871419

Expected Progeny Difference (EPD)

Calving / Acc		Birth / Acc		Weaning / Acc		Yearling / Acc		Milk / Acc		Total Maternal / Acc	
-2.5	0.06	6.3	0.35	51.3	0.24	84.4	0.22	16.7	0.1	42.4	

Igenity Profile

RFI: 6 Yield Grade: 7 Stayability: 5
 Tenderness: 4 Fat Thickness: 6 Mat. Calving Ease: 6
 Marbling Score: 4 Ribeye Area: 4 Docility: 6
 Quality Grade: 4 Heifer Preg Rate: 4 BVDV: NEG

Lot No: 56 **HEREFORD** **Tag No: 16**

On Test Wt: 975 Birth Wt: 91 Adj Rib Eye (sq in): 12.2 Scrot (cm): 40.5
 Off Test Wt: 1412.5 Calving Ease: U Adj Marbling %: 1.8 Horn Cond: P
 ADG: 3.91 Adj Yr. Wt 1120.79 Avg Fat (mm): 6 Rump fat (mm): 9
 WDA: 3.07 WDA Index: 96 RFI: 0.16

Owner: REMSHEG VALLEY ACRES, (PAUL & MARY DEWAR), RR#3, PUGWASH, NS, 902-243-3483

Name: REMSHAG BUD BAY BOY 82Y
 C02880647 Tattoo: JGCC 82Y Birth Date: 12/17/11
 Sire: BBPH 101S UNDERTAKER 115U C02907884
 Dam: REMSHAG TRANS GEORGIA 7S C02880647

Expected Progeny Difference (EPD)

Calving / Acc		Birth / Acc		Weaning / Acc		Yearling / Acc		Milk / Acc		Total Maternal / Acc	
-1.8	0.07	3.9	0.29	43.6	0.16	69.5	0.16	18.3	0.09	40.1	

Igenity Profile

RFI: 4 Yield Grade: 6 Stayability: 7
 Tenderness: 3 Fat Thickness: 6 Mat. Calving Ease: 5
 Marbling Score: 5 Ribeye Area: 4 Docility: 7
 Quality Grade: 5 Heifer Preg Rate: 4 BVDV: NEG

Lot No: 57**SHORTHORN****Tag No: 3**

On Test Wt: 910 Birth Wt: 100 Adj Rib Eye (sq in): 12 Scrot (cm): 38
 Off Test Wt: 1392.5 Calving Ease: U Adj Marbling %: 2.8 Horn Cond:
 ADG: 4.31 Adj Yr. Wt 1173.82 Avg Fat (mm): 6 Rump fat (mm): 5
 WDA: 3.22 WDA Index: 106 RFI: 0.73

Owner: (MICHAEL BERTRAM), 20840 RTE. 2 RR 4, HUNTER RIVER, PE, 902-964-3192

Name: ROANDALE ZOLTAN 2Z
 M476144 Tattoo: RDV 2Z Birth Date: 01/13/12
 Sire: ROANDALE ULTIMO 4U M473633
 Dam: TWIN MAPLE SWEET JULIANNE 6W F686306

Expected Progeny Difference (EPD)

Calving / Acc	Birth / Acc	Weaning / Acc	Yearling / Acc	Milk / Acc	Total Maternal / Acc

Igenity Profile

RFI: 4 Yield Grade: 7 Stayability: 6
 Tenderness: 3 Fat Thickness: 7 Mat. Calving Ease: 8
 Marbling Score: 6 Ribeye Area: 6 Docility: 8
 Quality Grade: 6 Heifer Preg Rate: 6 BVDV: NEG

Lot No: 58**SHORTHORN****Tag No: 66**

On Test Wt: 900 Birth Wt: 100 Adj Rib Eye (sq in): 15.3 Scrot (cm): 37.5
 Off Test Wt: 1295 Calving Ease: U Adj Marbling %: 3.1 Horn Cond:
 ADG: 3.53 Adj Yr. Wt 1122.74 Avg Fat (mm): 6 Rump fat (mm): 5
 WDA: 3.08 WDA Index: 102 RFI: -1.28

Owner: (SEYMOUR HURRY), 605 LOWER MALPEQUE RD. RTE 236, MILTON STATION, PE, 902-368-2073

Name: EVERGREEN BELLE'S BUSTER 7Z
 19534 Tattoo: BZR 7Z Birth Date: 01/25/12
 Sire: UPHILL BUSTER 9W M474178
 Dam: CRAWFDOWN BELLE 5T 16147

Expected Progeny Difference (EPD)

Calving / Acc	Birth / Acc	Weaning / Acc	Yearling / Acc	Milk / Acc	Total Maternal / Acc

Igenity Profile

RFI: 3 Yield Grade: 7 Stayability: 6
 Tenderness: 1 Fat Thickness: 6 Mat. Calving Ease: 6
 Marbling Score: 5 Ribeye Area: 4 Docility: 6
 Quality Grade: 5 Heifer Preg Rate: 4 BVDV: NEG

Lot No: 59**SHORTHORN****Tag No: 2**

On Test Wt:	875	Birth Wt:	97	Adj Rib Eye (sq in):	13	Scrot (cm):	35.5
Off Test Wt:	1272.5	Calving Ease:	U	Adj Marbling %:	3.6	Horn Cond:	
ADG:	3.55	Adj Yr. Wt	1098.02	Avg Fat (mm):	7	Rump fat (mm):	11
WDA:	3.01	WDA Index:	99			RFI:	0.37

Owner: (MICHAEL BERTRAM), 20840 RTE. 2 RR 4, HUNTER RIVER, PE, 902-964-3192

Name: ROANDALE ZEUS 4Z
M476141 Tattoo: RDV 4Z Birth Date: 01/23/12

Sire: SPR4S TRUE BLUE YO33 14415
Dam: EVERGREEN RACHEL 6R 14094

Expected Progeny Difference (EPD)

Calving / Acc	Birth / Acc	Weaning / Acc	Yearling / Acc	Milk / Acc	Total Maternal / Acc

Igenity Profile

RFI:	4	Yield Grade:	6	Stayability:	7
Tenderness:	3	Fat Thickness:	6	Mat. Calving Ease:	7
Marbling Score:	6	Ribeye Area:	4	Docility:	6
Quality Grade:	6	Heifer Preg Rate:	4	BVDV:	NEG

Lot No: 60**SALERS****Tag No: 22**

On Test Wt:	797.5	Birth Wt:	85	Adj Rib Eye (sq in):	14.6	Scrot (cm):	35
Off Test Wt:	1240	Calving Ease:	U	Adj Marbling %:	2.2	Horn Cond:	P
ADG:	3.95	Adj Yr. Wt	1134.34	Avg Fat (mm):	5	Rump fat (mm):	7
WDA:	3.11	WDA Index:	103			RFI:	-3.37

Owner: OUTBACK RANCH LAND & CATTLE, (ERNEST HUNTER), 3665 RTE 103, SIMONDS, NB, 506-375-8459

Name: OBR POLLED MIDNIGHT HEAT 6Z
P-G62237- Tattoo: OBR 6Z Birth Date: 02/16/12

Sire: MILLSTREAM NAG SLASH P-G55567-B
Dam: OBR OUTBACK HEATWAVE 14H 43679-B

Expected Progeny Difference (EPD)

Calving / Acc	Birth / Acc	Weaning / Acc	Yearling / Acc	Milk / Acc	Total Maternal / Acc

Igenity Profile

RFI:		Yield Grade:		Stayability:	
Tenderness:		Fat Thickness:		Mat. Calving Ease:	
Marbling Score:		Ribeye Area:		Docility:	
Quality Grade:		Heifer Preg Rate:		BVDV:	

Lot No: 61 **SALERS** **Tag No: 106**

On Test Wt: 875 Birth Wt: 101 Adj Rib Eye (sq in): 13.7 Scrot (cm): 39
 Off Test Wt: 1305 Calving Ease: U Adj Marbling %: 1.9 Horn Cond:
 ADG: 3.84 Adj Yr. Wt 1134.11 Avg Fat (mm): 5 Rump fat (mm): 5
 WDA: 3.11 WDA Index: 103 RFI: -0.39

Owner: (BRIAN & LINDA WALKER), 837 RTE 880, LOWER MILLSTREAM, NB, 506-433-1018

Name: MILLSTREAM WYA ZACH 18Z
 P-G61623-B Tattoo: BEW 18Z Birth Date: 01/26/12
 Sire: SC PLD WYATT EARP 9W P-G59710
 Dam: MILLSTREAM PLD BLK TANYA 23T P-G57052-B

Expected Progeny Difference (EPD)

Calving / Acc	Birth / Acc	Weaning / Acc	Yearling / Acc	Milk / Acc	Total Maternal / Acc

Igenity Profile

RFI: 6 Yield Grade: 7 Stayability: 8
 Tenderness: 1 Fat Thickness: 7 Mat. Calving Ease: 5
 Marbling Score: 7 Ribeye Area: 4 Docility: 3
 Quality Grade: 7 Heifer Preg Rate: 4 BVDV: NEG

Lot No: 62 **SALERS** **Tag No: 21**

On Test Wt: 695 Birth Wt: 80 Adj Rib Eye (sq in): 14.2 Scrot (cm): 32
 Off Test Wt: 1117.5 Calving Ease: U Adj Marbling %: 2.3 Horn Cond: P
 ADG: 3.77 Adj Yr. Wt 1099.43 Avg Fat (mm): 5 Rump fat (mm): 3
 WDA: 3.01 WDA Index: 100 RFI: -1.41

Owner: OUTBACK RANCH LAND & CATTLE, (ERNEST HUNTER), 3665 RTE 103, SIMONDS, NB, 506-375-8459

Name: OBR POLLED MAVERICK 14Z
 P-G62243-B Tattoo: OBR 14Z Birth Date: 03/15/12
 Sire: MILLSTREAM NAG SLASH P-G55867-B
 Dam: OBR POLLED SHANIA 21S P-G62242

Expected Progeny Difference (EPD)

Calving / Acc	Birth / Acc	Weaning / Acc	Yearling / Acc	Milk / Acc	Total Maternal / Acc

Igenity Profile

RFI: 6 Yield Grade: 5 Stayability: 8
 Tenderness: 6 Fat Thickness: 5 Mat. Calving Ease: 5
 Marbling Score: 5 Ribeye Area: 5 Docility: 7
 Quality Grade: 5 Heifer Preg Rate: 5 BVDV: NEG

Lot No: 63 **GELBVIEW** **Tag No: 72**

On Test Wt: 877.5 Birth Wt: 72 Adj Rib Eye (sq in): 11.2 Scrot (cm): 38
 Off Test Wt: 1285 Calving Ease: U Adj Marbling %: 2.2 Horn Cond: P
 ADG: 3.64 Adj Yr. Wt 1046.93 Avg Fat (mm): 4 Rump fat (mm): 3
 WDA: 2.87 WDA Index: 100 RFI: 1.76

Owner: O'FAELAN FARMS INC, (RON WHALEN), 165 HERMITAGE RD., VERNON RIVER, PE, 902-651-2006

Name: OFI RED ISLAND GEM 51Y
 CDGV147420 Tattoo: OFI 51Y Birth Date: 12/29/11
 Sire: MR WISE GUY 19W PD134125
 Dam: TALIA 42T PD124891

Expected Progeny Difference (EPD)

Calving / Acc	Birth / Acc	Weaning / Acc	Yearling / Acc	Milk / Acc	Total Maternal / Acc
6	0.6	56	84	29	57

Igenity Profile

RFI: 4 Yield Grade: 6 Stayability: 5
 Tenderness: 1 Fat Thickness: 5 Mat. Calving Ease: 7
 Marbling Score: 5 Ribeye Area: 5 Docility: 8
 Quality Grade: 5 Heifer Preg Rate: 5 BVDV: NEG

Lot No: 64 **ANGUS X SIMMENTAL** **Tag No: 29**

On Test Wt: 1020 Birth Wt: 94 Adj Rib Eye (sq in): 15.9 Scrot (cm): 41
 Off Test Wt: 1490 Calving Ease: U Adj Marbling %: 2.1 Horn Cond:
 ADG: 4.20 Adj Yr. Wt 1261.83 Avg Fat (mm): 7 Rump fat (mm): 4
 WDA: 3.46 WDA Index: 100 RFI: -0.08

Owner: ORCHARD HILL FARM, (STEVE & SUE DARRAGH), , PUGWASH, NS, 902-243-2843

Name:
 Tattoo: Rock 175 Birth Date: 01/15/12
 Sire: LFE HARD ROCK 474T PG676342
 Dam:

Expected Progeny Difference (EPD)

Calving / Acc	Birth / Acc	Weaning / Acc	Yearling / Acc	Milk / Acc	Total Maternal / Acc

Igenity Profile

RFI: Yield Grade: Stayability:
 Tenderness: Fat Thickness: Mat. Calving Ease:
 Marbling Score: Ribeye Area: Docility:
 Quality Grade: Heifer Preg Rate: BVDV:

Lot No: 65 **SIMMENTAL X LIMOUSIN** **Tag No: 30**

On Test Wt:	930	Birth Wt:	88	Adj Rib Eye (sq in):	14.7	Scrot (cm):	33
Off Test Wt:	1347.5	Calving Ease:	U	Adj Marbling %:	2	Horn Cond:	
ADG:	3.73	Adj Yr. Wt	1117.81	Avg Fat (mm):	5	Rump fat (mm):	5
WDA:	3.06	WDA Index:	104			RFI:	-0.90

Owner: ORCHARD HILL FARM, (STEVE & SUE DARRAGH), , PUGWASH, NS, 902-243-2843

Name:
Tattoo: Tilly 164 Birth Date: 01/06/12

Sire: OTHBERG TILLY
Dam:

Expected Progeny Difference (EPD)											
Calving / Acc		Birth / Acc		Weaning / Acc		Yearling / Acc		Milk / Acc		Total Maternal / Acc	

Igenity Profile
RFI: Yield Grade: Stayability:
Tenderness: Fat Thickness: Mat. Calving Ease:
Marbling Score: Ribeye Area: Docility:
Quality Grade: Heifer Preg Rate: BVDV:

Lot No: 66 **SIMMENTAL X LIMOUSIN** **Tag No: 34**

On Test Wt:	945	Birth Wt:	84	Adj Rib Eye (sq in):	14.7	Scrot (cm):	36
Off Test Wt:	1352.5	Calving Ease:	U	Adj Marbling %:	1.8	Horn Cond:	
ADG:	3.64	Adj Yr. Wt	1080.22	Avg Fat (mm):	4	Rump fat (mm):	3
WDA:	2.96	WDA Index:	101			RFI:	-2.13

Owner: ORCHARD HILL FARM, (STEVE & SUE DARRAGH), , PUGWASH, NS, 902-243-2843

Name:
Tattoo: RICH 130 Birth Date: 12/20/11

Sire: RICHMOND TABASCO
Dam:

Expected Progeny Difference (EPD)											
Calving / Acc		Birth / Acc		Weaning / Acc		Yearling / Acc		Milk / Acc		Total Maternal / Acc	

Igenity Profile
RFI: Yield Grade: Stayability:
Tenderness: Fat Thickness: Mat. Calving Ease:
Marbling Score: Ribeye Area: Docility:
Quality Grade: Heifer Preg Rate: BVDV:

Lot No: 67

SIMMENTAL X LIMOUSIN

Tag No: 33

On Test Wt:	877.5	Birth Wt:	80	Adj Rib Eye (sq in):	14.5	Scrot (cm):	35.2
Off Test Wt:	1282.5	Calving Ease:	U	Adj Marbling %:	1.5	Horn Cond:	
ADG:	3.62	Adj Yr. Wt	1013.23	Avg Fat (mm):	4	Rump fat (mm):	7
WDA:	2.78	WDA Index:	94			RFI:	-0.56

Owner: ORCHARD HILL FARM, (STEVE & SUE DARRAGH), , PUGWASH, NS, 902-243-2843

Name:

Tattoo: NT

Birth Date: 12/15/11

Sire: RICHMOND TARGET TSR 157T

CPM0191540

Dam:

Expected Progeny Difference (EPD)

Calving / Acc	Birth / Acc	Weaning / Acc	Yearling / Acc	Milk / Acc	Total Maternal / Acc

Igenity Profile

RFI:	Yield Grade:	Stayability:
Tenderness:	Fat Thickness:	Mat. Calving Ease:
Marbling Score:	Ribeye Area:	Docility:
Quality Grade:	Heifer Preg Rate:	BVDV:

Co-op Country Stores

are proud to work with Beef Producers in Atlantic Canada

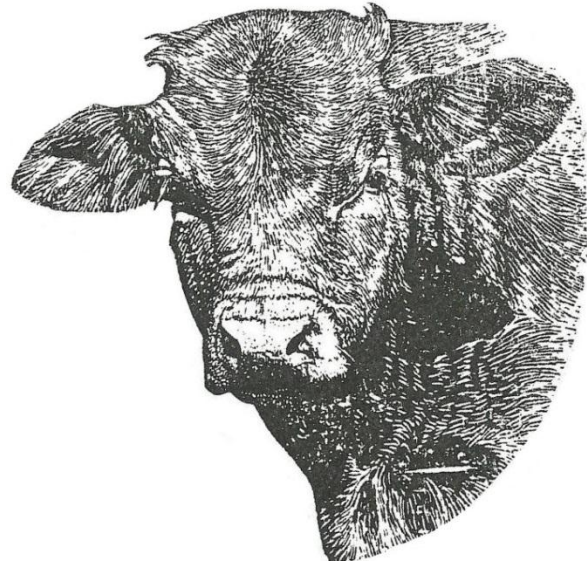
We have the products and programs to maximize profits in your beef operation. Visit us today.



Moncton Feed Mill 1-800-561-7980
 New Minas Feed Mill 1-800-668-6124
 Truro Feed Mill 1-800-565-FEED

www.co-opcountry.com

Earn AIR MILES® reward miles at Co-op Country



HEIFERS

DEFINITIONS

- ON TEST WEIGHT** is the weight taken November 30, 2012, after the bulls completed the normal adjustment period and started on official test. (Recorded in pounds)
- OFF TEST WEIGHT** is the weight on completion of test, that being the weight taken March 21 and 22, 2013. (Recorded in pounds)
- PREGNANCY STATUS** all heifers are selling open.

TERMS AND CONDITIONS

These terms are applicable to Replacement Heifers described within this Catalogue.

Cash or a satisfactory cheque. Payment shall be made to the clerk. Sale and release of the animals will be given only when satisfactory settlement has been made by the buyer.

BIDS

Every animal is pledged to absolute sale (unless withdrawn for just cause prior to being offered for sale), but the Sale Management shall have the right to set a floor price applicable to all animals offered for sale and to reject any bid which it considers irresponsible. Every animal will be sold to the highest bidder.

DISPUTES

In case of disputes, bidding will be reopened between the parties involved. If no further bidding is made, the buyer will be the person from whom the auctioneer accepted the last bid. The auctioneer's decision in matters will be final.

CERTIFICATE OF REGISTRY

Only purebred animals specified are eligible for registration.

RISK

All animals are at the purchaser's risk as soon as sold.

COMMISSION FEE

A 7% selling commission and a transfer cost will be charged to the seller and deducted from his payment.

ERRORS

Every attempt has been made to properly describe each lot. Neither the Management nor the compilers of pedigrees assume any responsibility for errors, which may occur in the Catalogue.

SALE MANAGED BY: MARITIME BEEF TESTING SOCIETY

NOTE:* THE ABOVE TERMS AND CONDITIONS SHALL BE A CONTRACT BETWEEN THE BUYER AND SELLER OF EACH LOT**

Lot # 68 Pedigree: Simmental
Tag# 220 Birth Date: 01/18/12
On Test Weight: 800 Birth Weight: 85
Off Test Weight: 1070 Breeding Status: Open
A.D.G. on Test: 2.05

Owner: Brodie Trenholm, Amherst, NS (902-669-4587)

Lot # 69 Pedigree: Simmental
Tag# 221 Birth Date: 02/02/12
On Test Weight: 875 Birth Weight: 85
Off Test Weight: 1100 Breeding Status: Open
A.D.G. on Test: 2.01

Owner: Brodie Trenholm, Amherst, NS (902-669-4587)

Lot # 70 Pedigree: Simmental (Registered)
Tag# 203 Birth Date: 02/29/12
On Test Weight: 625 Birth Weight: 94
Off Test Weight: 850 Breeding Status: Open
A.D.G. on Test: 2.01

Owner: MacLeod's Simmentals- Bill MacLeod, Fredericton, NB (506-459-7066)

Lot # 71 Pedigree: Simmental (Registered)
Tag# 204 Birth Date: 01/23/12
On Test Weight: 640 Birth Weight: 89
Off Test Weight: 880 Breeding Status: Open
A.D.G. on Test: 2.14

Owner: MacLeod's Simmentals- Bill MacLeod, Fredericton, NB (506-459-7066)

Lot # 72 Pedigree: Simmental/Limousin
Tag# 217 Birth Date: 01/02/12
On Test Weight: 635 Birth Weight: 84
Off Test Weight: 880 Breeding Status: Open
A.D.G. on Test: 2.19

Owner: Kevin Smith, Southampton, NS

Lot # 73 Pedigree: Limousin/Simmental
Tag# 218 Birth Date: 12/15/11
On Test Weight: 830 Birth Weight: 87
Off Test Weight: 1060 Breeding Status: Open
A.D.G. on Test: 2.05

Owner: Kevin Smith, Southampton, NS

Lot # 74 Pedigree: Simmental/Angus
Tag# 206 Birth Date: 12/21/11
On Test Weight: 775 Birth Weight: 75
Off Test Weight: 1000 Breeding Status: Open
A.D.G. on Test: 2.01

Owner: Whisky River Stock Farm, Montague, PE (902-838-4414)

Lot # 75 Pedigree: Simmental (Registered)
Tag# 219 Birth Date: 01/15/12
On Test Weight: 800 Birth Weight: 85
Off Test Weight: 1030 Breeding Status: Open
A.D.G. on Test: 2.05

Owner: Brodie Trenholm, Amherst, NS (902-669-4587)

Lot # 76 Pedigree: Simmental/Limousin
Tag# 213 Birth Date: 12/24/11
On Test Weight: 705 Birth Weight: 85
Off Test Weight: 945 Breeding Status: Open
A.D.G. on Test: 2.14

Owner: Kevin Smith, Southampton, NS

Lot # 77 Pedigree: Angus/Gelbvieh
Tag# 208 Birth Date: 01/31/12
On Test Weight: 780 Birth Weight: 96
Off Test Weight: 960 Breeding Status: Open
A.D.G. on Test: 1.61

Owner: O'Faelan Farms Inc.- Ron Whalen, Vernon River, PE (902-651-2006)

Lot # 78 Pedigree: Simmental (Registered)
Tag# 202 Birth Date: 03/11/12
On Test Weight: 610 Birth Weight: 87
Off Test Weight: 820 Breeding Status: Open
A.D.G. on Test: 1.88

Owner: MacLeod's Simmental- Bill MacLeod, Fredericton, NB (506-459-7066)

Lot # 79 Pedigree: Limousin (Registered)
Tag# 211 Birth Date: 01/07/12
On Test Weight: 640 Birth Weight: 85
Off Test Weight: 850 Breeding Status: Open
A.D.G. on Test: 1.88

Owner: Blue Diamond Polled Limousin- Barb McLaughlin, Stewiacke, NS

Lot # 80 Pedigree: Angus/Gelbvieh
Tag# 207 Birth Date: 12/29/11
On Test Weight: 645 Birth Weight: 74
Off Test Weight: 820 Breeding Status: Open
A.D.G. on Test: 1.56

Owner: O'Faelan Farms Inc.- Ron Whalen, Vernon River, PE (902-651-2006)

Lot # 81 Pedigree: Simmental
Tag# 205 Birth Date: 12/21/11
On Test Weight: 635 Birth Weight: 88
Off Test Weight: 860 Breeding Status: Open
A.D.G. on Test: 2.01

Owner: Michael Groom, Leversville, NB (506-466-2474)

Lot # 82 Pedigree: Angus/Gelbvieh
Tag# 209 Birth Date: 02/09/12
On Test Weight: 615 Birth Weight: 89
Off Test Weight: 775 Breeding Status: Open
A.D.G. on Test: 1.43

Owner: O'Faelan Farms Inc.- Ron Whalen, Vernon River, PE (902-651-2006)



Agriculture et
Agroalimentaire Canada

Agriculture and
Agri-Food Canada

AMHERST WANDLYN

Meeting & Convention Centre

Your Home Away From Home



Located 10 minutes from the Nappan Beef Test Station
Exit 3 Trans Canada Highway

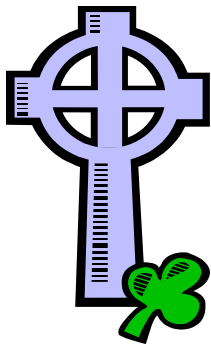
Licensed Restaurant

Enjoy Our Indoor Heated Pool and Hot Tub

902-667-3331

1-800-561-0000

www.wandlyninnns.com



O'Faelan Farms Inc.

Purebred Black and Red Angus

Purebred Gelbvieh

Registered Balancers

A herd of cattle is built around a set of good mothers. When we started our herd, we did a lot of research and brought in the best genetics available. Our foundation herd comes from LLB Angus and from Triple M Ranch Gelbvieh. Then, get great herd sires from prominent cattle companies such as Mountainview Farms and Davidson Gelbvieh. We are now doing an extensive AI program of 65 -75 cattle per year.

Why Gelbvieh? The Gelbvieh breed maintains moderate sized cows which eat less and wean more pounds of calf per pound of cow than all other breeds. Gelbviehs reach puberty at an earlier age and can calf earlier than other breeds, and are known for moderate birth weight and calving ease. Balancers (gelbvieh x angus) combine the growth, muscle, leanness, and fertility of gelbvieh with the maternal and marbling of angus.

Check out our cattle on test and visitors always welcome.

Ron, Tracey, Sean, Hannah, and Eireann Whalen

Vernon River PEI

902 393 6135



MATHESON FARMS

Brady, Jake, Paula & Brent Matheson
Forest Hill, PEI (902) 961-2166
bpmatheson@pei.sympatico.ca



Sire: Rendition



Grandsire: Wheatland Bull 462P

Purebred Black Simmental Bulls
from Trademark, Rendition and
Wheatland Bull genetics.

WHISKEY RIVER STOCK FARM

Wade Loane

Kilmuir, PEI (902) 838-4414



Check out our Simmental Bulls at Nappan, sired by our bull
TLSS/TLG Grand Torino 904. Son of Wheatland 680.

Grandson of World Champion Chubbs Flirt.

These bulls are halter broke. Also Simmental, Angus,
Simmental X Angus bulls home on farm.

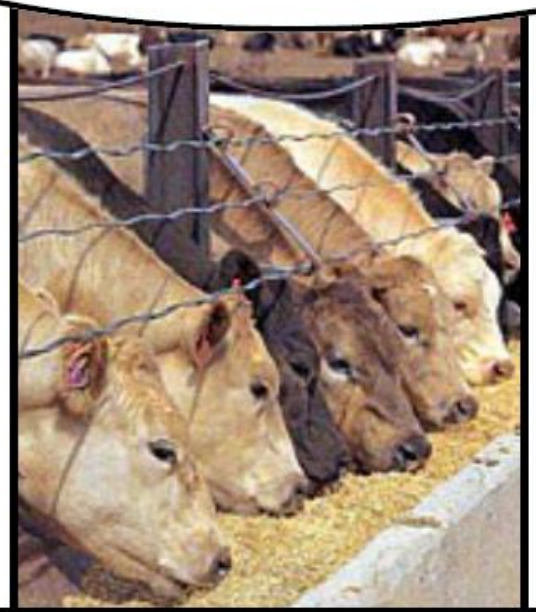
We are also a dealer for Silver Stream Canvass Barns.



CHAROLAIS

PROVEN Performance

In the pasture. In the sale ring. In the feedlot.



MARITIME CHAROLAIS ASSOCIATION

President: Ricky Milton
rmilton@upei.ca
(902) 393-8699

Secretary: Jennifer MacDonald
jenimac@nb.sympatico.ca
(506) 955-1989



CORNERSTONE *Charolais*



Ricky & Nancy Milton

**4558 Nine Mile Creek
Prince Edward Island
COA 1H2**

**902-675-3091 (home)
902-393-8699 (cell)**

**BREEDERS OF TOP QUALITY PUREBRED
CHAROLAIS CATTLE**

Check out our bulls on test: Tag #'s 67 & 68

THANK YOU to our 2012 Buyers of Breeding Stock:

Justin Carll - Knightville, NB
Westland MacLennan - New Glasgow, NS
DeLong Farms Ltd. - New Germany, NS
Daniel Cyr - St. Leonard, NB
Wally Ross - New Glasgow, NS
Steppler Farms - Miami, MB
Blackbern Farms - Forester's Falls, ON
Harminrest Charolais - Apohaqui, NB
WC&C Farms - Nine Mile Creek, PE



*73 TRANS CANADA HIGHWAY
CHARLOTTETOWN, PEI, C1E 1E8*

PHONE: 902-892-4188

CELL: 902-628-7443

FAX: 902-566-5854

EMAIL: info@goodequipmentltd.com



Kubota



OTHER PRODUCTS AVAILABLE

HORST Wagons & Buckets

Bale Feeders

Kverneland Plows

Hesston

Diamond Gates

Feeder Panels

Bush Hog

Allied

*Variety, combined with top products and knowledgeable sales staff
makes "Good Equipment" the place to shop!*

*Matt Lautner Cattle
with Thunderbook Farms goes...*

2013 Sire Directory soon Available
Visit MLC at www.mattlautnercattle.com



Canadian!



*Just 2 of the Outstanding Bulls we have available...
Call for our complete list!*



BODACIOUS

CAN SEMEN \$35

sire. BOJO • dam. MEYER 734 GRANDAUGHTER
dob. 2.27.2010 •THC •PHAF



WALKIE TALKIE

CAN SEMEN \$35

sire. WALKS ALONE • dam. GOOSE
dob. 2.21.2011 •THC •PHAF

Best Bulls In The Business
ORDER EARLY. DEMAND IS HIGH!

LAUTNER
MATT LAUTNER CATTLE

33427 OLD PORTLAND RD ADEL, IOWA 50003
MATT LAUTNER: 515.450.2800 JOSH GREINER: 515.460.3398
VISIT US ONLINE AT WWW.MATTLAUTNERCATTLE.COM

EASTERN CANADIAN REP'S

Beth Trueman • 306.630.6632 • beth_trueman@hotmail.com
Mark Trueman • 902.694.4181 • mstrueman@yahoo.ca
Isabelle Trueman • 902.694.6874 • isabelle.trueman@nbed.nb.ca

**Pour service en Francais*

www.thunderbrookfarms.com



L.X.L. FERME CHAROLAIS FARM

LOUIS & BENOITE LEBLANC



BREEDING CHAROLAIS CATTLE FOR 33 YEARS

FOR SALE

PUREBRED CHAROLAIS BULLS AND HEIFERS FOR SALE AT HOME

SPEACIAL THANKS TO ALL OF OUR BUYERS!

OUR COWS ARE MATERNAL, GOOD MILKING AND QUIET

Call for prices and genetic info!!

Louis & Benoit Leblanc

506(532-4028)

loule@nb.sympatico.ca

MARITIME LIMOUSIN ASSOCIATION



Easier calving, High efficiency of gain, Low birth to weaning mortality, High dressing percentages, Competitive weaning weights, Premium priced calves, Cows that produce into their teens. Red or black. Polled or horned.

Talk to a Limousin Breeder today to get the bull that will give you what you need for your next calf crop.

For quality breeding stock contact one of these breeders today.

Black River Limousin

Michael Byrne

5360 Hwy 6

Scotsburn, NS B0K 1R0

1-902-485-6731

Blue Diamond Polled Limousin

Barb McLaughlin

283 MacKay Siding Road

Stewiacke, NS B0N 2J0

1-902-639-2064 or bauld.mclau@ns.sympatico.ca

Centerbrook Limousin

Lester, Sharon, Craig & Family

384 North Tryon Crossroad

North Tryon, PE C0R 1A0

1-902-855-2033

Hillfoot Farm

Laurie, Joyce, Mike and Alice Horsnell

2587 Hwy 221

Aylesford, NS B0P 1C0

1-902-847-9615

Linden Crest Limousin

Manfred Zillig

RR#1

Scotch Village, NS B0N 2G0

1-902-757-2928

Othberg Limousin

Fritz and Sandra Othberg

1749 Rte 880

Summerfield, NB E4G 2L3

P:1-506-433-5245 F: 1-506-433-9083 E: othberg@nbnet.nb.ca

Website
willowpondfarm.ca

**Willow Pond Farm
Larry & Pat Ward
Middle Musquodoboit**

Phone
902 384 2878

Willow Pond Farm has been raising quality Herefords for over 39 years.



Steer sired by
Harvie Whirl Wind
ET 21W
Left in picture



Steer sired by
MHPH 13P Tundra
106T
Right in picture

We have 3 Harvie Whirl Wind Et 21W sons on test this year and one on test at home.

Willow-Pond Zap 12Z (on test at Nappan Tag Number 90) is a full brother to our bull that sold to Harold Isenor in 2012



Atlantic Canada's Livestock Marketing Centre

Sean Firth, Owner/Manager
(902) 893-9603 Murray Siding
(902) 670-5999 TRURO, NS



Winter and Spring 2013 Feeder Sale dates

Thursday January 17, 2013
Thursday February 14, 2013
Thursday March 14, 2013
Saturday April 13
Saturday May 4

Spring Equipment Auction Sale Date

Saturday April 20, 2013 10 am start

Dairy Livestock Sale last Thursday of Every Month – please book entries by Monday prior to sale day - see www.atlanticstockyards.com for information, contact;

Sean Firth, Owner/Manager
Cell: (902) 670-5999, Phone: (902) 893-9603
sfirth@atlanticstockyards.com

Cumberland Tractor Limited

Rte. 368, Pugwash, NS

B0K 1M0



VANMAR DFLFR



Agricultural Machinery

Blueberry mowers
and hay equipment

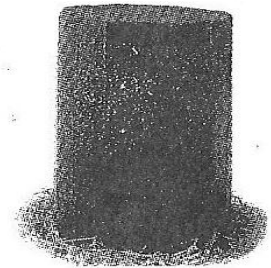


Celli Blueberry Mowers

SUP-R-BLOCK WITH BOVATEC

Sup-R-Block is a supplement specifically formulated to meet the nutritional deficiencies of pasture. Its concentrated sources of energy from non-fiber carbohydrates (starch) & protein stimulate muscle development.

- ✓ Improved daily gain & feed efficiency
- ✓ Reduced incidence of bloat due to ionophore presence
- ✓ Improved weaning weights
- ✓ Weatherproof, no feed wastage & self limiting



YOUR ATLANTIC PURINA DEALERS:

J & P Farm Services

Amherst NS - 902-667-8955
Fredericton NB - 506-453-7731
Moncton, NB - 506-858-7845
Sussex, NB - 506-433-4590

Valleyfield Farm Ltd.

Middle Sackville, NS - 902-865-2490

Cardigan Feed Service

Cardigan PEI - 902-583-2055

Illsley's Feed & Farm Services

Summerside, PEI - 902-436-6266

Clarence Farm Services Ltd.

Hunter River, PEI - 902-964-3050

Holna Farm Services

Antigonish NS - 902-863-2308

John LeBlanc Feed Services

Concession, NS - 902-769-2732

Clarence Farm Services Ltd.

Truro, NS - 902-895-6366



CLARENCE
FARM SERVICES LIMITED



FARM FOCUS

of Atlantic Canada

CURRENT NEWS!

UP-TO-DATE INFORMATION!

*For over 40 years, the editor and reporting staff
at Farm Focus have kept readers up-to-date
on the important issues facing
Atlantic Canada's Agricultural Industry.*

PUBLISHED THE 2ND WEDNESDAY OF EACH MONTH

Trust Farm Focus to cover the latest farming news.

Toll Free: 1-800-537-5507

**Subscribe for only \$15.95, including Tax, per year (12 issues) in Canada.
*Mail cheque or money order to***

Farm Focus
1588 Brunswick St. Suite 609, Halifax, Nova Scotia B3J 3J8

HARRISON'S



HOME BUILDING CENTRE

AMHERST
667-3306

PARRSBORO
254-3306

PUGWASH
243-3306

**FOR ALL YOUR BUILDING AND RENOVATION NEEDS:
HOME, COTTAGE, ETC. OUR FRIENDLY STAFF ARE
HERE TO ASSIST YOU.**

"QUALITY PRODUCTS, QUALITY SERVICE"
Drop in and see for yourselves at one of our three locations!

SALERS - it all begins with superb calving ease
and ends with a superior carcass

Need more fertility in your herd?
Tired of pulling calves at calving time?
Need stronger calves at birth?
Tired of teaching calves how to nurse?
Need more growth in your calves?
Need better feedlot performance in your calves?
Need better replacement females with great maternal traits?
YOU NEED TO LOOK AT A SALERS BULL THIS SPRING

Check out the Salers bulls on test at the Nappan Test Station
Watch for them at the sale – April 7, 2012

MARITIME SALERS ASSOCIATION

President - Ernest Hunter, 3665 Route 103, Simonds, NB E7P 2Z6 (506) 375-8459
Vice President- Chris McQuaid, RR 1, Mount Stewart, PEI COA 1TO (902) 892-3755

For a Salers information package or a list of breeders near you, please contact:
Secretary-Treasurer - Steve Parrish, RR 1, Waterville, NS, BOP 1VO (902) 538-1267
E-mail: steve.parrish@ns.sympatico.ca

SALERS CATTLE - THEY CALVE - THEY GROW - THEY MARBLE - THEY GRADE

Premium beef production starts with

SHORTHORN GENETICS!

Why not add the qualities that only Shorthorns can
add to your herd this year.

For a list of Shorthorn breeders in your area, contact:

THE MARITIME SHORTHORN ASSOCIATION

President: Jim Poole (902) 384-2964
Secretary: Lynn Poole (902) 384-2964

Maritime Simmental Association

*7th Annual Salt Water Classic Sale would be
Friday, August 23, 2013.*

*Please contact Bill MacLeod for information
or to make consignments*

For information contact the following or a breeder in your area.

Peter Gaunce
President
New Scotland, NB
(506) 383-4829

Ralph Taylor
Secretary
Truro, NS
(902) 895-2119

Bill MacLeod
Treasurer
Fredericton, NB
(506) 459-7066

Lacey Fisher
CSA Director
Amherst, NS
(902) 661-0766

OTHBERG LIMOUSIN

Fritz & Sandra Othberg
1749 Rte. 880

Summerfield, New Brunswick E4G 2L3

Telephone: (506) 433-5245

Email: othberg@nbnet.nb.ca

Buyers are demanding moderate size, high yielding carcasses.
Limousins have what they demand. "We have Limousin Breeding Stock for you."

BRED HEIFERS AND BRED COWS AVAILABLE

Check out our Bulls on Test

Don't miss your opportunity to select from proven cow families!!



547 Onslow Road P.O. Box 976
Truro, Nova Scotia B2N 5G7
(902) 895-2857 (902) 893-1188 fax

~ LOCALLY OWNED AND OPERATED ~

WE ARE SUPPLIERS OF:
FERTILIZER – LIME
HERBICIDES – FUNGICIDES – INSECTICIDES
SILAGE FILM – SILAGE WRAP/TUBES – BALER TWINE
MAPLESEED/PICKSEED DEALER
DEKALB CORN AND SOYBEANS

CERTIFIED AGRONOMISTS ON STAFF TO HELP YOU

**SERVING THE AGRICULTURAL AND FORESTRY INDUSTRY
FROM OUR PLANT IN TRURO**

PARRISH SALERS FARMS
BREEDERS OF POLLED PUREBRED SALERS CATTLE



Your largest source of Registered
Purebred Salers Cattle in Nova Scotia

We have sold bulls to farms in all four
Atlantic Provinces. Let us put a Salers
bull in YOUR pasture this year.

Your call or visit is always appreciated

STEVE & DAVID PARRISH
1717 Prospect Road, Waterville, R.R. # 1 Kings Co., N. S. BOP 1VO
Phone : (902) 538 - 9174 (902) 538 - 1267 **E-mail: s.parrish@eastlink.ca**

MARITIME ANGUS ASSOCIATION



Contacts:

NS	Betty Lou Scott	902-925-2057
NB	Debbie Higgins	506-847-8265
PEI	Hilda Colodey	902-675-3171
Junior President	Taylor Welch	506-246-6000
Canadian Director	Jim Colodey	902-675-3171
Canadian Jr. Director	Rebecca Gilby	902-883-8057

MAKE PLANS TO ATTEND THESE UPCOMING ANGUS EVENTS

June 6-9, 2013	Canadian Angus AGM	Guelph, Ontario
June 14-15, 2013	Maritime Angus Field Day	Truro, Nova Scotia
July 25-27, 2013	CJAA Showdown	Armstrong, British Columbia



www.dixonfarms.ca

dixonfarms1@live.com

Tim 902 432 4771

Eric 902 437 2275

D

140 North Tryon Cross Rd, Albany, PEI

- Purebred and commercial Angus breeding stock and prospect show calves.

-For pictures and pedigree information on our bull on test at Nappan and the 4 at

home

visit the "bulls for sale" page on our website

VAUGHN MELANSON
Trucking & Excavating Ltd.

RR 6
Amherst NS
B4H 3Y4

TELEPHONE: (902) 667-9467
FAX: (902) 667-1354



Lime, Sawdust and Shavings Available
Lime Spreader Rental

LADY FANE CHAROLAIS
BREEDING FOR QUALITY &
PERFORMANCE

Purebred Charolais Bulls
Purebred & Charolais Crossbred
Heifers

Ph/Fax: 902-658-2623
Cell: 902-658-5177

David & Vicki Francis & Family
RR#2 Crapaud, PEI C0A 1J0

WINDCREST FARM

THE SCOTT'S - MT. THOM, N.S.

TEL: 1-902-925-2057

FAX: 1-902-925-2655

EMAIL: windcrest.farm@ns.sympatico.ca

REGISTERED BLACK ANGUS CATTLE SINCE 1986

FUNDY BAY TRACTORS

FENDT



VALTRA

RR#6 AMHERST, NS, B4H 3Y4

PHONE: (902) 667-8624

FAX: (902) 667-0177

Workman's Shorthorns Purebred Cattle



Murray & Pat Workman & Family
Box 1093 Antigonish B2G 2S3
(902) 863-2683



Twin Maple Shorthorns Jim and Lynn Poole

Middle Musquodoboit, NS

(902) 384-2964

29 Twin Maple Steers/Heifers fed to market produced 21 AAA and 8 AA carcasses with an average dressed weight of 741 lb. and a 58% lean meat yield.

All were straight bred Shorthorns off our cows.....not bad for a maternal breed!



Proud Co-Sponsor of the
Youth Leadership Congress

You've never seen tractors like these before!

Our M40 Series tractors will make your tough day seem a whole lot easier. Combine that with our legendary Kubota diesel engine and our synchronized transmission and you've got one powerful performer.

M5040/M6040/M7040 M8540/M9540

- 45 to 84 PTO Hp
- Ultra Grand Cab or ROPS models available
- Hydraulic or synchronized shuttle transmission
- LCD display of PTO and travel speed



M8540NPK



M9540



M8540 Narrow



**Jocelyn & Bill Barrett
Dale Black**

Box 9060
Woodstock, NB E7M 5C3 Dale Black's Cell: 506.612.1232
jocelynb@barrettcorp.com Jocelyn's Cell: 506.328.7011



**BLUE DIAMOND
LIMOUSIN**

An All Polled Herd

Barb McLaughlin

283 McKay Siding Road
Stewiacke NS B0N 2J0
(902) 639-2064

Email: bauld.mclau@sympatico.ca

AUCTIONEER - ANDY CARTER
SPECIALIZING IN **ALL** YOUR AUCTION NEEDS

R R. 3, AMHERST ANDY & ELLA CARTER
N. S. B4H 3Y1 (902) 667-6163

**Brian, Joan, Mark
& Beth Trueman**

2786 Route 6, RR. 4, Amherst N.S., B4H 3Y2
Phone: 902-667-1137 E-mail: btrue@eastlink.ca

CEILIDH TRAIL RED ANGUS

Isaac Smith
Keeper of the Cows

Box 33 Mabou Phone: 902-945-2719
NS, B0E 1X0 Fax: 902-945-2078
Email: clayton.farm@ns.sympatico.ca



Centerbrook Limousin

Polled and Full Blood Organic Potatoes
Visitors Welcome!

Lester and Sharon Craig

384 North Tryon, PEI Ph/Fax: (902) 855-2033

HIDDEN HOLLOW FARM

PETER & MARLENE GAUNCE
587 Victoria Road
New Scotland, NB E1G 3L7
Phone: (506) 383-4829
Cell: (506)-227-4820

"SIMMENTALS"

**ROCKY KNOLL FARM LTD
WITHROW'S FARM MARKET
AND MEAT SHOP**

RAWDON, NS
Ph/Fax: 902-632-2397
Email: sarah.withrow@ns.sympatico.ca

**Top Quality Replacements Heifers
Natural Beef Retailer and Farm Market**

Mark your
calendars!



Atlantic Farm Mechanization Show 2013

March 7, 8, 9, 2013

For further information Contact:

ATLANTIC FARM MECHANIZATION SHOW, INC.

P.O. Box 686, Moncton, NB E1C 8M7

Phone: 506-856-9898 Fax: 506-852-4826

Please visit our website - www.farmmechshow.com

EMAIL: info@farmmechshow.com

MONCTON COLISEUM COMPLEX, MONCTON, N.B.

Admission discount coupons available at your local farm equipment dealer or your Provincial Department of Agriculture.

Enter to win an iPad 16 GB wi-fi

"Energy Efficient Agriculture-Next Generation"

Ruby Sponsors: Rural Delivery

"Presenting Sponsor"

Farm Credit Canada

Financement agricole Canada

Canada



DOWNEAST CHAROLAIS

BELLEISLE
CREEK
N.B.



PHONE
485-2634

BOB · DIANE EASTWOOD & FAMILY

"White for You"

FULL & PUREBRED CATTLE

KENRIDGE FARM
SIMMENTALS

Mike & Linda Groom & Family

760 Board Rd. Phone: (506) 466-2474
Leverville, NB Cell: (506) 467-6357

NORTHUMBERLAND VETERINARY SERVICES LTD.

Jillian Foster, DVM
Susan Hunter, DVM
Laura Coulter, DVM

11072 Rte 6 Phone: 902-243-3999
PO Box 384 Fax: 902-243-2344
Pugwash, NS, B0K 1L0 Toll Free: 888-243-0111

Email: nvs@northumberlandvets.com www.northumberlandvets.com

SUSSEX & STUDHOLM AGRICULTURAL SOCIETY
CO-OP AUCTION BARN

Regular Sales every other week starting January 4th, 2012

Regular Sales & Feeder Sales starting @ 11:30

Auctioneer: Steve Liptay
For more information contact Sarah at (506) 432-1841
E-mail: sussex-auction@hotmail.com

WINDYKNOLL FARM

BRUCE & SHELLEY PARSONS

727 SPA SPRINGS RD
RR#2 KINGSTON, NS
Telephone: (902) 765-8446

SIMMENTALS

FULLBLOOD PUREBRED & FULL FLECKVIEH



Timberwood Farms
Amherst, NS

Purebred & Fullblood Simmentals
Registered Quarter Horses
CKC Registered Labrador Retrievers

Jacob, Lacey, Adolynn & Grace Fisher
Res: 902-661-0766 Cell: 902-664-6206
www.timberwoodfarms.com

MacLeod Simmental Genetics

Bill MacLeod

63 Talisman Crescent
Fredericton, NB
E3C 1L9
506-459-7066

IN 2006 PFIZER REVOLUTIONIZED
THE WAY CALVES ARE PROTECTED

6 YEARS LATER
YOU CAN STILL COUNT ON
THE PROVEN EFFICACY OF DRAXXIN®



Talk to your veterinarian about our **30-day guarantee.**



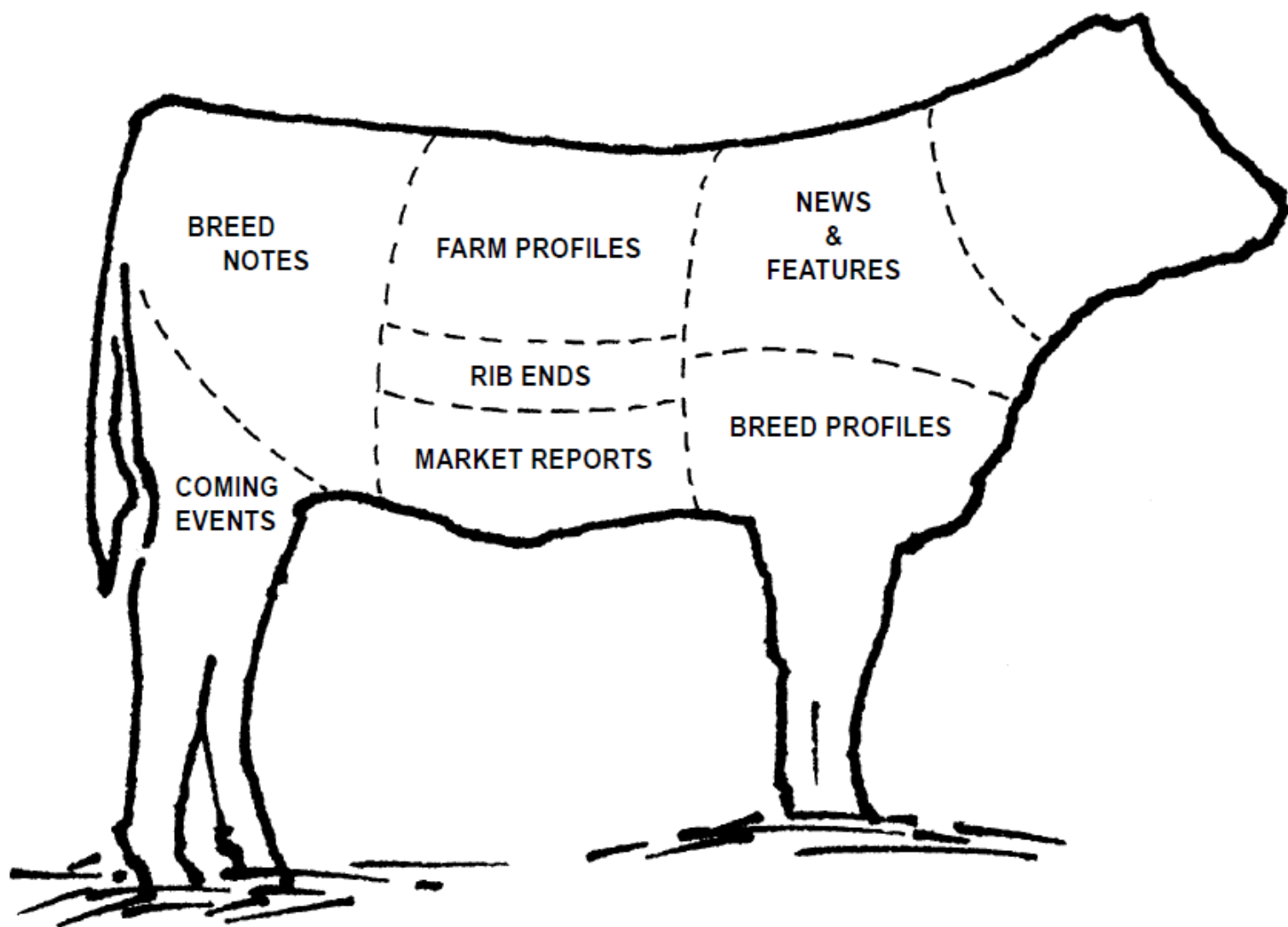
> With you since the beginning and still focusing on your world

Pfizer Animal Health

Draxxin®

* Registered trademark of Pfizer Products Inc.; Pfizer Canada Inc., licensee. DXN JADP03B 0712 E

It's All Beef !



Atlantic Beef

The magazine for progressive beef producers

SUBSCRIBE TODAY

1-877-354-3764

www.countrymagazines.com

Farm Focus

Proudly supports the beef Industry
In Atlantic Canada

#	Price	#	Price	#	Price	#	Price

Farm Focus
1888 Brunswick Street Suite 609
Halifax, Nova Scotia B3J 3J8
Toll Free: 1-800-537-5507